

---

**SERVICE INFORMATION LETTER NO. SI40NG-081**

NOTE: Service information letters (SILs) are used only:

1. To distribute information from Diamond Aircraft Industries Inc. to our customers.
2. To distribute applicable information/documents from our suppliers to our customers with additional information.

NOTE: Typically there is no revision service for SILs. Each new information or change will be sent along with a new SIL.

**1. TECHNICAL DETAILS**

**1.1 Aircraft Affected**

For replacement: DA 40 NG aircraft with component serial numbers indicated in Austro Engine MSB-E4-034/2 or subsequent approved revisions.

For inspection: DA 40 NG aircraft with component serial numbers indicated in Austro Engine MSB-E4-035 or subsequent approved revisions.

**1.2 Subject**

Austro Engine Mandatory Service Bulletin MSB-E4-034/2 - high pressure pump driving gear replacement, MSB-E4-035 - high pressure pump driving gear inspection, and EASA AD 2021-0203-E.

ATA-Code: 72-00

**1.3 Reason**

For MSB-E4-034/2: It has been discovered that certain engines have been equipped with high pressure fuel pump assemblies whose driving gears may be subject to premature failure. It was determined that excess use of tool P/N AE300T012-1 has caused damage to the driving gears during production. If left uncorrected, this may result in rail pressure loss and uncommanded engine shutdown.

For MSB-E4-035: It has been discovered that certain engines may be subject to premature failure of the high pressure fuel pump driving gear due to the stack-up of tolerances between the cylinder head, the cylinder head cover, the camshaft gear, and the high pressure pump gear. If left uncorrected, this may result in rail pressure loss and uncommanded engine shutdown.

EASA has issued AD 2021-0203-E mandating the execution of both MSBs.

---

#### 1.4 Information

For detailed technical information, refer to Austro Engine MSB-E4-034/2, MSB-E4-035, and EASA AD 2021-0203-E, which are applicable without any further additions or restrictions.

Austro Engine MSB-E4-034/2, MSB-E4-035, and EASA AD 2021-0203-E are attached to this SIL. In case of doubt, contact Austro Engine GmbH.

#### 2. OTHER DETAILS

To obtain satisfactory results, procedures specified in this service information letter must be accomplished in accordance with accepted methods and current government regulations. Diamond Aircraft Industries Inc. cannot be responsible for the quality of work performed in accomplishing the requirements of this service information letter. Diamond Aircraft reserves the right to void continued warranty coverage in the area affected by this service information letter if it is not incorporated. If you no longer own the aircraft to which this service information letter applies, please forward it to the current owner and send the name of the current owner to Diamond Aircraft Industries Inc. at the address below.

Diamond Aircraft Industries Inc.  
1560 Crumlin Sideroad, London, Ontario, Canada  
N5V 1S2

Customer Support  
Phone: (519) 457-4041, Fax: (519) 457-4045  
Email: [support-canada@diamondaircraft.com](mailto:support-canada@diamondaircraft.com)

Technical Publications  
Email: [Techpubs@diamondaircraft.com](mailto:Techpubs@diamondaircraft.com)



## Emergency Airworthiness Directive

**AD No.:** 2021-0203-E

**Issued:** 10 September 2021

Note: This Emergency Airworthiness Directive (AD) is issued by EASA, acting in accordance with Regulation (EU) 2018/1139 on behalf of the European Union, its Member States and of the European third countries that participate in the activities of EASA under Article 129 of that Regulation.

This AD is issued in accordance with Regulation (EU) 748/2012, Part 21.A.3B. In accordance with Regulation (EU) 1321/2014 Annex I, Part M.A.301, the continuing airworthiness of an aircraft shall be ensured by accomplishing any applicable ADs. Consequently, no person may operate an aircraft to which an AD applies, except in accordance with the requirements of that AD, unless otherwise specified by the Agency [Regulation (EU) 1321/2014 Annex I, Part M.A.303] or agreed with the Authority of the State of Registry [Regulation (EU) 2018/1139, Article 71 exemption].

**Design Approval Holder's Name:**

AUSTRO ENGINE GmbH

**Type/Model designation(s):**

E4 and E4P engines

**Effective Date:** 14 September 2021

**TCDS Number(s):** EASA.E.200

**Foreign AD:** Not applicable

**Supersedure:** None

### ATA 72 – Engine – High Pressure Pump Driving Gear – Inspection / Replacement

---

**Manufacturer(s):**

Austro Engine GmbH

**Applicability:**

Model E4 and E4P engines, all serial numbers (s/n).

These engines are known to be installed on, but not limited to, Diamond Aircraft Industries DA 40 NG, DA 42 NG, DA 42 M-NG and DA 62 aeroplanes.

**Definitions:**

For the purpose of this AD, the following definitions apply:

**The inspection SB:** Austro Engine Service Bulletin (SB) MSB-E4-035.

**The replacement SB:** Austro Engine SB MSB-E4-034/1.

**Affected cylinder head:** Cylinder heads, having Part Number (P/N) E4A-12-500-000.

**Affected HPP gear:** High pressure pump (HPP) driving gears, having P/N E4A-30-000-201 and having a s/n as listed in Chapter 1.3 of the replacement SB, as defined in this AD.



**Serviceable part:** Any HPP driving gear, eligible for installation, which is not an affected part.

**Groups:** Group 1 are Model E4 engines in configuration “-A”, installed on single engine aeroplanes. Group 2 are Model E4 engines in configuration “-B” or “-C” and Model E4P engines, installed on twin-engine aeroplanes.

**Reason:**

Occurrences were reported of HPP driving gear failure. Subsequent investigation determined that a certain batch of HPP driving gears was produced with a worn out assembly tool P/N AE300T012-1. Those HPP driving gears may have been damaged during assembly. Concurrently, it was determined that, for engines equipped with a certain cylinder head, a stack up of tolerances exists between the cylinder head, cylinder head cover, camshaft gear and HPP gear. Both scenarios could result in premature HPP gear failure.

This condition, if not corrected, could lead to engine in-flight shut-down with consequent forced landing, possibly resulting in damage to the aeroplane and injury to occupants.

To address this potential unsafe condition, Austro Engine published the inspection SB, as defined in this AD, to provide instructions for HPP gear inspection on engines equipped with an affected cylinder head, as defined in this AD. Austro Engine also published the replacement SB, as defined in this AD, to provide instructions for replacement of affected HPP gears, as defined in this AD.

For the reason described above, this AD requires inspection and/or replacement of HPP gears and prohibits re-installation of affected HPP gears.

**Required Action(s) and Compliance Time(s):**

Required as indicated, unless accomplished previously:

**Inspection:**

- (1) For engines equipped with an affected cylinder head: Before next flight after the effective date of this AD, inspect the HPP driving gear in accordance with the instructions of the inspection SB.

**Corrective Action(s):**

- (2) If, during the inspection as required by paragraph (1) of this AD, the HPP driving gear does not meet the acceptable criteria, as defined in the inspection SB, before next flight, contact Austro Engine for approved instructions and accomplish those instructions accordingly.
- (3) Replacement of the HPP driving gear on an engine in accordance with the instructions of the replacement SB is an acceptable method to comply with the requirements of paragraphs (1) and (2) of this AD for that engine.

**Replacement:**

- (4) For engines equipped with an affected HPP gear: Within the compliance times specified in Table 1 of this AD, as applicable, replace each affected HPP gear with a serviceable part in accordance with the instructions of the replacement SB.



Table 1 – HPP Driving Gear Replacement

Engine Group / Flight Hours (FH) accumulated (see Note 1)		Compliance Time
1	40 FH or more	Before next flight after the effective date of this AD
	less than 40 FH	Before exceeding 40 FH
2	80 FH or more	Before next flight after the effective date of this AD
	less than 80 FH	Before exceeding 80 FH

Note 1: Unless specified otherwise, the FH in Table 1 of this AD are those accumulated by the affected HPP gear since first installation on the HPP.

**Ferry Flight:**

(5) For a twin-engine aeroplane that has one or two Group 2 engine(s) installed, a single ferry flight is allowed to position that aeroplane to a location where the actions required by this AD can be accomplished on the affected engine(s).

**Part(s) Installation:**

(6) From the effective date of this AD, do not install an affected part on any engine.

**Ref. Publications:**

Austro Engine SB MSB-E4-034 Revision 1 dated 10 September 2021.

Austro Engine SB MSB-E4-035 original issue dated 10 September 2021.

The use of later approved revisions of the above-mentioned documents is acceptable for compliance with the requirements of this AD.


**Remarks:**

1. If requested and appropriately substantiated, EASA can approve Alternative Methods of Compliance for this AD.
2. The results of the safety assessment have indicated the need for immediate publication and notification, without the full consultation process.
3. Enquiries regarding this AD should be referred to the EASA Safety Information Section, Certification Directorate. E-mail: [ADs@easa.europa.eu](mailto:ADs@easa.europa.eu).
4. Information about any failures, malfunctions, defects or other occurrences, which may be similar to the unsafe condition addressed by this AD, and which may occur, or have occurred on a product, part or appliance not affected by this AD, can be reported to the [EU aviation safety reporting system](#). This may include reporting on the same or similar components, other than those covered by the design to which this AD applies, if the same unsafe condition can exist or may develop on an aircraft with those components installed. Such components may be installed under an FAA Parts Manufacturer Approval (PMA), Supplemental Type Certificate (STC) or other modification.



5. For any question concerning the technical content of the requirements in this AD, please contact: Austro Engine GmbH, Rudolf-Diesel-Str. 11, 2700 Wiener Neustadt, Austria, Telephone +43-2622-23000-2525, E-mail [service@austroengine.at](mailto:service@austroengine.at).



	Mandatory Service Bulletin No. MSB-E4-034/2	Austro Engine GmbH Rudolf-Diesel-Strasse 11 A-2700 Wiener Neustadt Tel: +43 2622 23000 FAX: +43 2622 23000-2711
---	--	---

# MANDATORY SERVICE BULLETIN

**No. MSB-E4-034/2**  
**Supersedes MSB-E4-034/1**

## 1. BASIC INFORMATION

### 1.1. SUBJECT

High Pressure Pump (HPP) driving gear replacement

**Note:** This revision explicitly clarifies the Time of Compliance of this MSB and includes further check post new gear installation. In addition, the table of the affected serial numbers is now sorted by HPP serial numbers to improve readability.

### 1.2. DEFINITIONS AND ACRONYMS

For the purpose of this Service Bulletin, the following definitions and acronyms apply:

<b>Affected part:</b>	High Pressure Pump driving gear p/n E4A-30-000-201 having s/n listed in chapter 1.3
<b>Fh:</b>	flight hours
<b>HPP:</b>	High Pressure pump
<b>p/n or p/ns:</b>	Part number or Part Numbers
<b>SB:</b>	Service Bulletin
<b>s/n or s/ns:</b>	Serial Number or Serial Numbers

First Issue Date			Rev. No.	Revision Date			Page
11	Aug	2021	2	10	09	2021	1-19

### 1.3. ENGINES AFFECTED

**Engine affected:** E4 Series  
**Serial numbers affected:** All E4/E4P engines having an affected part installed  
**Part Affected:** High Pressure Pump driving gear p/n E4A-30-000-201 s/ns as per following table

**Caution:** For engines where the MSB-E4-034 rev. 0 was already performed, the new installed gear must be inspected in accordance with the requirements of chapter 2.1, points 10 and 11 of the MSB-E4-034 at rev. 1 before the next flight.

**Note:** The following table provides affected driving gear s/ns installed on certain batches of E4A-30-000-000 and E4A-30-000-BHY HPP. To determine if an affected part is installed, s/ns of the HPP on which an affected part is installed and the engine s/n on which such HPP is installed are provided. Where the engine s/n is not indicated, the HPP was provided as spare part.

**Note:** with the revision 1 the serial numbers listed below are sort by HPP s/ns to improve readability. No changes on serial numbers, nor addition of new serial number is part of this revision 1.

**Note:** with the revision 2 the possibility for a ferry flight is added for twin engine airplanes, and a typo in the process summarisation chart is corrected

High Pressure Pump S/N	Gear S/N	Engine S/N	High Pressure Pump S/N	Gear S/N	Engine S/N	High Pressure Pump S/N	Gear S/N	Engine S/N
19-09-11-02-01162	0246		20-06-18-02-00889	1049		20-10-26-02-00628	1950	
19-09-11-02-01167	0414	E4-C-05107	20-06-18-02-00890	1051		20-10-26-02-00629	1968	
19-09-11-02-01168	0270	E4P-C-05003	20-06-18-02-00891	1001		20-10-26-02-00630	1775	
19-09-11-02-01169	0240		20-06-18-02-00893	1028	E4-A-00198	20-10-26-02-00631	1773	
19-09-11-02-01170	0410	E4P-C-05005	20-06-18-02-00894	0550		20-10-26-02-00632	1903	
19-09-11-02-01171	0412	E4-A-00232	20-06-18-02-00895	1041	E4-C-06042	20-10-26-02-00633	1211	
19-09-11-02-01172	0415	E4-C-05109	20-06-18-02-00896	1048	E4-C-06031	20-10-26-02-00634	1233	
19-09-11-02-01189	0382		20-06-18-02-00897	1030		20-10-26-02-00635	1363	E4-A-06082
19-09-11-02-01190	0267		20-06-18-02-00898	1027		20-10-26-02-00637	1785	
19-09-11-02-01191	0258		20-06-18-02-00899	1056	E4P-C-06027	20-10-26-02-00638	1958	
19-09-11-02-01192	0256		20-06-18-02-00900	0664	E4-A-06021	20-10-26-02-00639	1887	
19-09-11-02-01193	0261		20-06-18-02-00901	1114		20-10-26-02-00640	1982	
19-09-11-02-01194	0257		20-06-18-02-00902	0979		20-10-26-02-00641	1953	
19-09-11-02-01195	0264		20-06-18-02-00903	1061		20-10-26-02-00642	1811	
19-09-11-02-01196	0255		20-06-18-02-00904	0762		20-10-26-02-00643	1818	
19-09-11-02-01197	0274		20-06-18-02-00905	0756		20-10-26-02-00644	1890	
19-09-11-02-01198	0408		20-06-18-02-00906	1060	E4-A-00475	20-10-26-02-00645	1781	
19-09-11-02-01199	0272		20-06-18-02-00907	1023	E4-A-00408	20-12-14-02-00002	1955	
19-09-11-02-01200	0333		20-06-18-02-00908	1073		20-12-14-02-00003	1449	E4-A-06088
19-09-11-02-01201	0332		20-06-18-02-00909	1042		20-12-14-02-00004	1976	
19-09-11-02-01202	0244		20-06-18-02-00910	1066	E4-C-06043	20-12-14-02-00005	1938	
19-09-11-02-01203	0330		20-06-18-02-00911	0766		20-12-14-02-00006	1816	
19-09-11-02-01204	0383		20-06-18-02-00912	1046		20-12-14-02-00007	1947	
19-09-11-02-01205	0254		20-06-18-02-00913	1044		20-12-14-02-00009	1929	
19-09-11-02-01206	0324		20-06-18-02-00914	1103	E4-C-06032	20-12-14-02-00010	1988	
19-09-11-02-01207	0262		20-06-18-02-00915	1128	E4-B-00112	20-12-14-02-00011	1799	
19-09-11-02-01208	0237		20-06-18-02-00916	0699		20-12-14-02-00012	1986	
19-09-11-02-01209	0329		20-06-18-02-00917	1026	E4-A-00214	20-12-14-02-00013	1936	
19-09-11-02-01210	0386		20-06-18-02-00918	1100		20-12-14-02-00014	1368	
19-09-11-02-01211	0265		20-06-18-02-00919	1069		20-12-14-02-00017	1940	
19-10-01-02-00755	0233		20-06-18-02-00920	0723	E4-A-06025	20-12-14-02-00020	1422	E4-A-06080

First Issue Date			Rev. No.	Revision Date			Page
11	Aug	2021	2	10	09	2021	2-19





**Mandatory Service Bulletin**  
**No. MSB-E4-034/2**

Austro Engine GmbH  
 Rudolf-Diesel-Strasse 11  
 A-2700 Wiener Neustadt  
 Tel: +43 2622 23000  
 FAX: +43 2622 23000-2711

High Pressure Pump S/N	Gear S/N	Engine S/N
19-10-01-02-00756	0224	E4-B-05006
19-10-01-02-00760	0226	E4-B-05004
19-10-01-02-00763	0241	E4-B-05001
19-10-01-02-00764	0416	
19-10-01-02-00768	0260	
19-10-01-02-00772	0268	E4-A-05086
19-10-01-02-00775	0248	
19-10-01-02-00779	0370	
19-10-01-02-00784	0231	
19-10-01-02-00786	0242	
19-10-01-02-00788	0235	
19-10-01-02-00790	0266	
19-10-01-02-00796	0131	E4-C-05106
19-10-01-02-00804	0228	E4-B-05002
19-10-01-02-00809	0227	E4-A-05085
19-10-14-02-00404	0222	
19-10-14-02-00405	0247	E4-C-05110
19-10-14-02-00409	0364	E4-A-05084
19-10-14-02-00410	0253	
19-10-14-02-00415	0365	E4-C-05105
19-10-14-02-00416	0232	
19-10-14-02-00420	0236	
19-10-14-02-00432	0229	E4-B-05008
19-10-14-02-00437	0411	E4-A-05075
19-10-14-02-00438	0239	E4-B-05005
19-10-14-02-00446	0374	E4-A-05087
19-10-14-02-00454	0193	E4P-B-05004
19-10-14-02-00457	0251	E4-C-05108
19-12-12-02-00002	0195	E4-A-05081
19-12-12-02-00004	0366	
19-12-12-02-00005	0169	
19-12-12-02-00009	0363	
19-12-12-02-00011	0358	
19-12-12-02-00015	0190	
19-12-12-02-00016	0376	
19-12-12-02-00017	0369	E4-A-05079
19-12-12-02-00020	0146	
19-12-12-02-00023	0225	
19-12-12-02-00029	0361	E4P-C-05001
19-12-12-02-00031	0372	E4P-C-05004
19-12-12-02-00032	0127	
19-12-12-02-00033	0177	
19-12-12-02-00034	0179	
19-12-12-02-00035	0118	
19-12-12-02-00039	0223	
19-12-12-02-00046	0367	E4-C-05111
19-12-12-02-00047	0120	E4P-B-05003
19-12-12-02-00048	0362	
19-12-12-02-00049	0197	
19-12-12-02-00057	0122	
19-12-12-02-00058	0155	
19-12-12-02-00064	0205	
19-12-12-02-00065	0119	E4P-C-05002
19-12-12-02-00066	0407	E4-C-05112
19-12-12-02-00068	0263	E4-B-05012
19-12-12-02-00070	0371	E4-A-05083
19-12-12-02-00071	0238	E4-C-05117
19-12-12-02-00072	0413	E4-B-05007
19-12-12-02-00076	0117	
19-12-12-02-00077	0249	
19-12-12-02-00079	0245	E4-C-05116

High Pressure Pump S/N	Gear S/N	Engine S/N
20-06-18-02-00921	1127	
20-06-18-02-00922	1034	E4-A-00367
20-06-18-02-00923	1032	
20-06-18-02-00924	1036	
20-06-18-02-00925	1094	
20-06-18-02-00926	1011	E4-A-06061
20-06-18-02-00927	1038	
20-06-18-02-00928	1031	E4-C-00041
20-06-18-02-00929	1037	
20-06-18-02-00930	1015	E4-A-06064
20-06-18-02-00931	0632	E4-A-06024
20-06-18-02-00932	1082	
20-06-18-02-00933	1024	E4-A-06060
20-06-18-02-00934	0833	E4-A-00456
20-06-18-02-00935	1012	
20-06-18-02-00936	1006	
20-06-18-02-00937	1021	
20-06-18-02-00938	1004	
20-06-18-02-00939	0622	
20-06-18-02-00940	0729	
20-06-18-02-00941	0585	
20-06-18-02-00942	0769	
20-06-18-02-00943	0830	
20-06-18-02-00944	0849	
20-06-18-02-00945	0820	
20-06-18-02-00946	0571	
20-06-18-02-00947	0825	E4-A-06030
20-06-18-02-00948	0683	E4-A-06013
20-06-18-02-00949	0734	
20-06-18-02-00950	0738	
20-06-18-02-00951	1081	
20-06-18-02-00952	0690	
20-06-18-02-00953	0827	
20-06-18-02-00954	0641	
20-06-18-02-00955	0805	
20-06-18-02-00956	0625	
20-06-18-02-00957	0792	
20-06-18-02-00958	0815	
20-06-18-02-00959	0840	
20-06-18-02-00960	0839	
20-06-18-02-00961	0644	E4P-C-06008
20-06-18-02-00962	0802	E4-A-00323
20-06-18-02-00963	0810	E4-C-00091
20-06-18-02-00964	0793	
20-06-18-02-00965	0966	
20-06-18-02-00966	0783	
20-06-18-02-00967	0848	
20-06-18-02-00968	0974	
20-06-18-02-00970	0736	
20-06-18-02-00971	0856	
20-06-18-02-00972	1079	E4-A-00507
20-06-18-02-00973	0732	
20-06-18-02-00974	0674	
20-06-18-02-00975	1050	
20-06-18-02-00976	0671	
20-06-18-02-00977	0647	
20-06-18-02-00978	1101	E4-B-00061
20-06-18-02-00979	1105	E4-C-06036
20-06-18-02-00980	0844	
20-06-18-02-00981	0743	
20-06-18-02-00982	0841	

High Pressure Pump S/N	Gear S/N	Engine S/N
20-12-14-02-00021	1941	
20-12-14-02-00024	1779	
20-12-14-02-00025	1946	
20-12-14-02-00026	1974	
20-12-14-02-00028	1969	
20-12-14-02-00035	1921	
20-12-14-02-00036	1817	
20-12-14-02-00038	1881	
20-12-14-02-00039	1346	
20-12-14-02-00043	1830	
20-12-14-02-00048	1178	
20-12-14-02-00052	1350	E4-C-00604
20-12-14-02-00053	1437	
20-12-14-02-00059	1167	
20-12-14-02-00064	1405	
20-12-14-02-00065	1331	E4-A-06076
20-12-14-02-00069	1434	E4-A-06087
20-12-14-02-00073	1375	
20-12-14-02-00074	1389	E4-A-06092
20-12-14-02-00075	1403	E4-C-06057
20-12-14-02-00079	1342	
20-12-14-02-00080	1380	
20-12-14-02-00081	1343	E4-A-06068
20-12-14-02-00086	1400	E4P-C-06049
21-02-08-02-00002	1349	
21-02-08-02-00003	1446	
21-02-08-02-00004	1319	E4-A-00115
21-02-08-02-00005	1340	E4-B-00541
21-02-08-02-00006	1439	E4P-C-06056
21-02-08-02-00007	1402	
21-02-08-02-00008	1384	
21-02-08-02-00009	1412	
21-02-08-02-00010	1372	
21-02-08-02-00011	1355	E4-A-06095
21-02-08-02-00013	1163	E4-C-06055
21-02-08-02-00015	1479	
21-02-08-02-00016	1432	
21-02-08-02-00017	1360	
21-02-08-02-00018	1383	
21-02-08-02-00019	1329	
21-02-08-02-00020	1330	E4-A-06085
21-02-08-02-00021	1435	
21-02-08-02-00022	1410	
21-02-08-02-00023	1373	E4-C-00344
21-02-08-02-00024	1395	
21-02-08-02-00025	1367	E4-C-06068
21-02-08-02-00026	1320	
21-02-08-02-00027	1414	
21-02-08-02-00028	1392	
21-02-08-02-00029	1431	
21-02-08-02-00030	1333	E4-A-00504
21-02-08-02-00031	1493	
21-02-08-02-00032	1376	
21-02-08-02-00033	1317	
21-02-08-02-00034	1409	E4-A-06079
21-02-08-02-00035	1377	
21-02-08-02-00036	1394	
21-02-08-02-00037	1345	E4-A-06093
21-02-08-02-00038	1454	
21-02-08-02-00040	1335	E4P-C-06048
21-02-08-02-00041	1406	

First Issue Date			Rev. No.	Revision Date			Page
11	Aug	2021	2	10	09	2021	3-19



**Mandatory Service Bulletin**  
**No. MSB-E4-034/2**

Austro Engine GmbH  
 Rudolf-Diesel-Strasse 11  
 A-2700 Wiener Neustadt  
 Tel: +43 2622 23000  
 FAX: +43 2622 23000-2711

High Pressure Pump S/N	Gear S/N	Engine S/N
19-12-12-02-00080	0409	E4-B-05010
20-01-15-02-00861	0271	E4P-C-05008
20-01-15-02-00864	0348	
20-01-15-02-00888	0425	
20-01-15-02-00912	0288	E4-C-00001
20-01-15-02-00926	0315	E4P-C-005011
20-01-15-02-00929	0385	
20-01-15-02-00933	0375	
20-01-15-02-00934	0180	E4-C-05093
20-01-15-02-00938	0360	
20-01-15-02-00939	0143	
20-01-15-02-00940	0250	E4-B-05003
20-01-15-02-00941	0147	
20-01-15-02-00942	0230	E4-A-05082
20-01-15-02-00943	0368	
20-01-15-02-00944	0252	
20-01-15-02-00945	0359	E4-C-05094
20-02-13-02-01378	0338	
20-02-13-02-01379	0399	E4P-C-05007
20-02-13-02-01380	0297	E4-C-05119
20-02-13-02-01381	0351	E4-A-05089
20-02-13-02-01382	0350	
20-02-13-02-01383	0393	
20-02-13-02-01384	0378	
20-02-13-02-01385	0380	
20-02-13-02-01386	0278	
20-02-13-02-01387	0286	E4-C-00263
20-02-13-02-01388	0273	
20-02-13-02-01389	0443	
20-02-13-02-01390	0284	E4-B-05009
20-02-13-02-01391	0296	E4-C-05115
20-02-13-02-01392	0419	E4-A-05088
20-02-13-02-01393	0334	
20-02-13-02-01394	0402	
20-02-13-02-01395	0314	
20-02-13-02-01396	0280	
20-02-13-02-01397	0381	
20-02-13-02-01398	0421	
20-02-13-02-01399	0319	E4-A-00487
20-02-13-02-01400	0259	
20-02-13-02-01401	0384	
20-02-13-02-01402	0377	
20-02-13-02-01403	0331	
20-02-13-02-01404	0345	
20-02-13-02-01405	0276	
20-02-13-02-01406	0275	
20-02-13-02-01407	0304	
20-02-13-02-01408	0355	E4-C-05113
20-02-13-02-01409	0279	E4-B-05011
20-02-13-02-01410	0341	
20-02-13-02-01411	0282	
20-02-13-02-01412	0404	
20-02-13-02-01413	0306	E4-C-05126
20-02-13-02-01414	0283	
20-02-13-02-01415	0356	
20-02-13-02-01416	0269	E4P-C-05009
20-02-13-02-01417	0298	
20-02-13-02-01418	0426	E4-C-05125
20-02-13-02-01419	0405	
20-02-13-02-01420	0310	
20-02-13-02-01421	0318	E4-A-05077

High Pressure Pump S/N	Gear S/N	Engine S/N
20-06-18-02-00983	1043	E4P-C-06019
20-06-18-02-00984	1116	
20-06-18-02-00985	1047	
20-06-18-02-00986	0752	
20-06-18-02-00987	0789	
20-06-18-02-00988	0661	
20-06-18-02-00989	1045	E4-A-06047
20-06-18-02-00990	1093	E4-C-06033
20-06-18-02-00991	1059	
20-06-18-02-00992	1106	
20-06-18-02-00993	0895	
20-06-18-02-00994	1065	
20-06-18-02-00995	1022	
20-06-18-02-00997	1039	
20-06-18-02-00998	1013	
20-06-18-02-01000	1089	E4-B-00050
20-06-18-02-01001	1064	
20-06-18-02-01003	1067	
20-06-18-02-01004	1070	
20-06-18-02-01005	1017	E4-A-06046
20-06-18-02-01006	1035	
20-06-18-02-01007	1080	E4-A-00508
20-06-18-02-01008	1075	
20-06-18-02-01009	1052	E4P-C-06020
20-06-18-02-01010	1115	
20-06-18-02-01011	1074	E4-C-06029
20-06-18-02-01012	1018	E4-C-06024
20-06-18-02-01013	1072	
20-06-18-02-01014	1033	
20-06-18-02-01015	1062	
20-06-18-02-01016	1020	
20-06-18-02-01017	1029	
20-07-10-02-00002	0698	
20-07-10-02-00003	1309	E4P-C-06038
20-07-10-02-00004	0861	E4P-C-06011
20-07-10-02-00005	0898	
20-07-10-02-00006	0854	
20-07-10-02-00007	0741	
20-07-10-02-00008	0889	
20-07-10-02-00009	0867	E4-A-00207
20-07-10-02-00010	0697	
20-07-10-02-00011	0748	
20-07-10-02-00012	0711	
20-07-10-02-00013	0862	
20-07-10-02-00015	0912	E4P-C-06010
20-07-10-02-00016	0864	E4-C-06018
20-07-10-02-00017	1154	
20-07-10-02-00018	0946	E4-B-00039
20-07-10-02-00019	0750	
20-07-10-02-00020	0704	
20-07-10-02-00021	0911	
20-07-10-02-00022	0803	
20-07-10-02-00023	0885	E4-A-06031
20-07-10-02-00024	0710	E4-A-05091
20-07-10-02-00025	0910	E4P-Z-06002
20-07-10-02-00026	0836	
20-07-10-02-00027	0852	E4-A-05092
20-07-10-02-00028	0724	
20-07-10-02-00029	0733	
20-07-10-02-00030	0873	E4P-C-00224
20-07-10-02-00031	1085	

High Pressure Pump S/N	Gear S/N	Engine S/N
21-02-08-02-00042	1420	
21-02-08-02-00043	1404	
21-02-08-02-00044	1387	
21-02-08-02-00045	1452	E4P-C-06050
21-02-08-02-00047	1353	
21-02-08-02-00048	1322	E4-C-06067
21-02-08-02-00049	1430	E4-C-06058
21-02-08-02-00050	1397	
21-02-08-02-00051	1448	E4P-C-00067
21-02-08-02-00052	1168	E4-A-06084
21-02-08-02-00053	1464	
21-02-08-02-00054	1433	E4-C-06064
21-02-08-02-00055	1341	E4-A-00270
21-02-08-02-00056	1374	
21-02-08-02-00057	1423	
21-02-08-02-00059	1166	
21-02-08-02-00060	1407	E4-B-00382
21-02-08-02-00061	1323	E4-A-00492
21-02-08-02-00062	1445	E4-A-06090
21-02-08-02-00063	1165	E4-B-00143
21-02-08-02-00064	1413	
21-02-08-02-00065	1386	E4-A-00428
21-02-08-02-00066	1356	E4-C-06059
21-02-08-02-00067	1382	E4-C-06054
21-02-08-02-00068	1436	
21-02-08-02-00069	1450	E4-B-00540
21-02-08-02-00070	1344	
21-02-08-02-00071	1324	
21-02-08-02-00072	1357	
21-02-08-02-00073	1460	E4-C-00008
21-02-08-02-00074	1461	
21-02-08-02-00075	1408	E4-A-06081
21-02-08-02-00076	1339	
21-02-08-02-00077	1326	
21-02-08-02-00078	1337	
21-02-08-02-00079	1371	
21-02-08-02-00080	1458	E4-C-06079
21-02-08-02-00081	1532	
21-02-08-02-00082	1421	E4-C-06056
21-02-08-02-00083	1459	
21-02-08-02-00084	1318	
21-02-08-02-00085	1327	E4-B-06002
21-02-08-02-00086	1393	E4-A-06094
21-02-08-02-00087	1418	E4P-C-06047
21-02-08-02-00088	1416	
21-02-08-02-00089	1495	
21-02-08-02-00091	1453	
21-02-08-02-00092	1455	E4-C-06072
21-02-08-02-00093	1465	
21-02-08-02-00095	1425	
21-02-08-02-00096	1472	
21-02-08-02-00098	1359	E4-A-06078
21-02-08-02-00099	1332	
21-02-08-02-00100	1415	
21-02-08-02-00101	1378	
21-02-08-02-00102	1370	
21-02-08-02-00103	1500	
21-02-08-02-00104	1338	E4-A-06086
21-02-08-02-00105	1398	E4-A-06083
21-02-08-02-00106	1336	E4-C-06065
21-02-08-02-00107	1419	E4-B-06001

First Issue Date			Rev. No.	Revision Date			Page
11	Aug	2021	2	10	09	2021	4-19



Mandatory Service Bulletin  
No. MSB-E4-034/2

Austro Engine GmbH  
Rudolf-Diesel-Strasse 11  
A-2700 Wiener Neustadt  
Tel: +43 2622 23000  
FAX: +43 2622 23000-2711

High Pressure Pump S/N	Gear S/N	Engine S/N
20-02-13-02-01422	0292	
20-02-13-02-01423	0325	
20-02-13-02-01424	0511	
20-02-13-02-01425	0307	E4-A-00397
20-02-13-02-01426	0527	
20-02-13-02-01427	0302	E4-C-05122
20-02-13-02-01428	0316	
20-02-13-02-01429	0401	E4-C-06001
20-02-13-02-01430	0347	E4-C-00218
20-02-13-02-01431	0394	
20-02-13-02-01432	0352	E4-A-00037
20-02-13-02-01433	0285	
20-02-13-02-01434	0289	
20-02-13-02-01435	0301	E4P-C-05010
20-02-13-02-01436	0388	
20-02-13-02-01437	0295	
20-02-13-02-01438	0397	E4-C-05114
20-02-13-02-01439	0234	
20-02-13-02-01440	0303	E4P-C-05006
20-02-13-02-01441	0343	
20-02-13-02-01442	0373	
20-02-13-02-01443	0353	E4-A-05090
20-02-13-02-01444	0320	E4-C-05120
20-02-13-02-01445	0354	
20-02-13-02-01446	0502	
20-02-13-02-01447	0321	
20-02-13-02-01448	0300	E4-A-00266
20-02-13-02-01449	0337	
20-02-13-02-01450	0281	
20-02-13-02-01451	0396	E4-A-05076
20-02-13-02-01452	0392	E4-C-05121
20-02-13-02-01453	0507	
20-02-13-02-01454	0328	
20-02-13-02-01455	0290	
20-02-13-02-01456	0349	E4-A-00079
20-02-13-02-01457	0390	E4-C-00233
20-02-13-02-01458	0294	
20-02-13-02-01459	0339	
20-02-13-02-01460	0441	
20-02-13-02-01461	0291	
20-02-13-02-01462	0336	
20-02-13-02-01463	0277	E4-B-00110
20-02-13-02-01464	0406	E4P-C-05012
20-02-13-02-01465	0461	
20-02-13-02-01466	0293	E4-C-05118
20-02-13-02-01467	0503	
20-02-13-02-01468	0530	
20-02-13-02-01470	0379	
20-02-13-02-01471	0299	E4-C-05123
20-02-13-02-01472	0287	
20-02-13-02-01473	0453	
20-02-13-02-01474	0423	
20-02-13-02-01475	0540	
20-02-13-02-01476	0395	
20-02-13-02-01477	0440	
20-02-13-02-01478	0444	
20-02-13-02-01479	0476	
20-02-13-02-01480	0486	
20-02-13-02-01481	0439	
20-02-13-02-01482	0497	E4-A-06008
20-02-13-02-01483	0449	

High Pressure Pump S/N	Gear S/N	Engine S/N
20-07-10-02-00032	0942	
20-07-10-02-00033	1153	
20-07-10-02-00034	0832	
20-07-10-02-00035	0929	
20-07-10-02-00036	0703	
20-07-10-02-00037	0948	E4-A-06036
20-07-10-02-00038	0860	E4-C-00122
20-07-10-02-00039	0821	
20-07-10-02-00040	1310	
20-07-10-02-00041	1158	E4-A-00066
20-07-10-02-00042	0930	
20-07-10-02-00043	0877	
20-07-10-02-00044	1151	
20-07-10-02-00045	0917	E4-A-00116
20-07-10-02-00046	0878	E4P-C-05013
20-07-10-02-00047	0788	
20-07-10-02-00048	1132	
20-07-10-02-00049	1141	
20-07-10-02-00050	1170	
20-07-10-02-00051	1184	
20-07-10-02-00052	1122	E4-C-06044
20-07-10-02-00053	1109	
20-07-10-02-00054	1155	
20-07-10-02-00055	1058	
20-07-10-02-00056	1147	
20-07-10-02-00057	1144	
20-07-10-02-00058	1121	
20-07-10-02-00059	1126	E4-A-00485
20-07-10-02-00060	1133	
20-07-10-02-00061	1095	
20-07-10-02-00062	1098	
20-07-10-02-00063	1148	
20-07-10-02-00064	1161	E4-C-06035
20-07-10-02-00065	1136	
20-07-10-02-00066	1130	
20-07-10-02-00067	1125	E4P-C-06026
20-07-10-02-00068	1152	
20-07-10-02-00069	1096	E4-A-06059
20-07-10-02-00070	1110	
20-07-10-02-00071	1294	
20-07-10-02-00072	1143	
20-07-10-02-00073	1140	E4-A-06065
20-07-10-02-00074	1173	
20-07-10-02-00075	1138	
20-07-10-02-00076	1171	
20-07-10-02-00077	1040	
20-07-10-02-00079	1119	E4-A-06058
20-07-10-02-00080	1280	E4-A-06057
20-07-10-02-00081	1118	
20-07-10-02-00082	1088	
20-07-10-02-00083	1188	
20-07-10-02-00084	1305	
20-07-10-02-00085	1102	
20-07-10-02-00086	1181	E4-C-06046
20-07-10-02-00088	1180	
20-07-10-02-00090	1183	E4-A-06052
20-07-10-02-00091	1304	E4P-C-06031
20-08-21-02-00582	1149	
20-08-21-02-00583	1162	
20-08-21-02-00584	1123	
20-08-21-02-00585	1150	

High Pressure Pump S/N	Gear S/N	Engine S/N
21-02-08-02-00108	1411	
21-02-08-02-00109	1463	
21-02-08-02-00110	1426	E4-A-06077
21-02-08-02-00111	1399	
21-02-08-02-00112	1328	
21-02-08-02-00113	1427	
21-02-08-02-00114	1523	E4-C-00473
21-02-08-02-00115	1191	
21-02-08-02-00116	1352	
21-02-08-02-00117	1417	
21-02-08-02-00118	1429	
21-02-08-02-00119	1424	
21-02-08-02-00120	1192	
21-02-08-02-00121	1469	E4-C-06070
21-02-08-02-00122	1447	
21-02-08-02-00123	1484	
21-02-08-02-00124	1177	
21-02-08-02-00125	1364	
21-02-08-02-00126	1396	E4-A-00455
21-02-08-02-00127	1379	
21-02-08-02-00128	1348	
21-02-08-02-00129	1321	
21-02-08-02-00130	1451	E4-A-00532
21-02-08-02-01548	1179	
21-02-08-02-01549	1477	
21-02-08-02-01550	1515	
21-02-08-08-00014	1476	E4-C-06073
21-02-08-08-00090	1496	
21-03-03-02-02275	1533	
21-03-03-02-02276	1478	
21-03-03-02-02277	1837	
21-03-03-02-02278	1485	
21-03-03-02-02279	1517	
21-03-03-02-02280	1487	
21-03-03-02-02281	1547	
21-03-03-02-02282	1503	
21-03-03-02-02283	1499	
21-03-03-02-02284	1543	
21-03-03-02-02285	1544	
21-03-03-02-02286	1498	
21-03-03-02-02287	1467	
21-03-03-02-02288	1542	
21-03-03-02-02289	1534	
21-03-03-02-02290	1483	
21-03-03-02-02291	1536	
21-03-03-02-02292	1481	
21-03-03-02-02293	1491	E4-C-06071
21-03-03-02-02294	1504	
21-03-03-02-02295	1501	
21-03-03-02-02296	1525	
21-03-03-02-02297	1490	
21-03-03-02-02298	1518	
21-03-03-02-02299	1521	E4P-C-00066
21-03-03-02-02300	1497	
21-03-03-02-02302	1751	
21-03-03-02-02303	1699	
21-03-03-02-02304	1527	E4-C-00018
21-03-03-02-02305	1468	
21-03-03-02-02306	1489	
21-03-03-02-02307	1466	
21-03-03-02-02308	1482	

First Issue Date			Rev. No.	Revision Date			Page
11	Aug	2021	2	10	09	2021	5-19



Mandatory Service Bulletin  
No. MSB-E4-034/2

Austro Engine GmbH  
Rudolf-Diesel-Strasse 11  
A-2700 Wiener Neustadt  
Tel: +43 2622 23000  
FAX: +43 2622 23000-2711

High Pressure Pump S/N	Gear S/N	Engine S/N
20-02-13-02-01484	0542	
20-02-13-02-01485	0450	
20-02-13-02-01486	0446	
20-02-13-02-01487	0462	
20-02-13-02-01488	0536	
20-02-13-02-01489	0454	
20-02-13-02-01490	0531	
20-02-13-02-01491	0445	
20-02-13-02-01492	0428	
20-02-13-02-01493	0524	
20-02-13-02-01494	0491	
20-02-13-02-01495	0504	
20-02-13-02-01496	0547	
20-02-13-02-01497	0520	
20-02-13-02-01498	0455	E4-A-06010
20-02-13-02-01499	0487	
20-02-13-02-01500	0479	
20-02-13-02-01501	0422	
20-02-13-02-01502	0432	
20-02-13-02-01503	0559	
20-02-13-02-01504	0556	
20-02-13-02-01505	0528	
20-02-13-02-01506	0452	E4-A-06006
20-02-13-02-01507	0489	
20-02-13-02-01508	0317	
20-02-13-02-01509	0529	E4-A-06011
20-02-13-02-01510	0631	
20-02-13-02-01511	0451	
20-02-13-02-01512	0472	E4-A-06009
20-02-13-02-01513	0600	
20-02-14-02-00084	1494	E4P-C-06051
20-03-04-02-00003	0563	
20-03-04-02-00004	0460	
20-03-04-02-00005	0435	
20-03-04-02-00006	0538	
20-03-04-02-00007	0434	
20-03-04-02-00008	0311	
20-03-04-02-00009	0463	
20-03-04-02-00010	0344	
20-03-04-02-00011	0346	E4-C-06005
20-03-04-02-00012	0387	
20-03-04-02-00013	0447	
20-03-04-02-00014	0492	
20-03-04-02-00015	0465	
20-03-04-02-00016	0357	
20-03-04-02-00017	0420	E4-C-06003
20-03-04-02-00018	0433	
20-03-04-02-00019	0309	
20-03-04-02-00020	0391	
20-03-04-02-00021	0424	E4-C-06004
20-03-04-02-00022	0570	
20-03-04-02-00023	0430	
20-03-04-02-00024	0305	
20-03-04-02-00025	0398	E4-C-06006
20-03-04-02-00026	0322	
20-03-04-02-00027	0484	
20-03-04-02-00029	0323	E4-C-06002
20-03-04-02-00030	0417	
20-03-04-02-00031	0403	E4-A-06001
20-03-04-02-00032	0490	
20-03-04-02-00033	0096	

High Pressure Pump S/N	Gear S/N	Engine S/N
20-08-21-02-00586	1104	
20-08-21-02-00587	1366	E4-C-06066
20-08-21-02-00588	1253	
20-08-21-02-00589	1117	
20-08-21-02-00590	1107	
20-08-21-02-00591	1176	
20-08-21-02-00592	0686	E4-A-06014
20-08-21-02-00594	1203	
20-08-21-02-00595	1189	
20-08-21-02-00596	1083	
20-08-21-02-00597	1137	
20-08-21-02-00598	1124	
20-08-21-02-00599	1175	
20-08-21-02-00600	1160	
20-08-21-02-00601	1142	
20-08-21-02-00602	1185	
20-08-21-02-00603	0779	
20-08-21-02-00604	1084	
20-08-21-02-00605	1135	
20-08-21-02-00606	1187	
20-08-21-02-00607	1156	
20-08-21-02-00608	1241	E4P-C-06029
20-08-21-02-00609	1129	
20-08-21-02-00610	1097	
20-08-21-02-00611	1157	
20-08-21-02-00612	1086	
20-08-21-02-00613	1146	
20-08-21-02-00614	1145	
20-08-21-02-00615	1120	
20-08-21-02-00616	1174	
20-08-21-02-00617	1139	
20-08-21-02-00618	1087	
20-08-21-02-00619	1099	
20-08-21-02-00620	1131	
20-08-21-02-00621	1186	E4-C-00182
20-08-21-02-00622	1223	E4-A-00216
20-08-21-02-00623	1108	
20-08-21-02-00624	1306	E4-C-06037
20-08-21-02-00625	1200	
20-08-21-02-00626	1182	E4-C-06047
20-08-21-02-00627	1245	E4-C-06041
20-08-21-02-00628	1312	
20-08-21-02-00629	1071	
20-08-21-02-00630	1159	
20-08-21-02-00631	1172	E4-A-06050
20-08-21-02-00632	1134	
20-08-21-02-00633	1239	
20-08-21-02-00634	1365	E4-A-00603
20-08-21-02-00635	1444	
20-08-21-02-00636	0814	
20-08-21-02-00637	1266	
20-08-21-02-00638	1164	
20-08-21-02-00639	1248	E4-C-06048
20-08-21-02-00640	1232	E4P-C-06044
20-08-21-02-00641	1218	
20-08-21-02-00642	1197	E4-C-00042
20-08-21-02-00643	1438	E4P-C-00069
20-08-21-02-00644	1195	
20-08-21-02-00645	1262	E4-A-00491
20-08-21-02-00646	1257	
20-08-21-02-00647	0834	

High Pressure Pump S/N	Gear S/N	Engine S/N
21-03-03-02-02309	1505	
21-03-03-02-02310	1522	
21-03-03-02-02311	1519	E4-A-06102
21-03-03-02-02312	1539	
21-03-03-02-02313	1725	
21-03-03-02-02314	1492	
21-03-03-02-02315	1546	
21-03-03-02-02316	1524	
21-03-03-02-02317	1502	
21-03-03-02-02318	1516	
21-03-03-02-02319	1510	
21-03-03-02-02320	1475	
21-03-03-02-02321	1701	
21-03-03-02-02322	1443	
21-03-03-02-02323	1512	E4-C-00119
21-03-03-02-02325	1538	E4-A-00660
21-03-03-02-02326	1514	
21-03-03-02-02327	1526	E4-B-00063
21-03-03-02-02328	1700	
21-03-03-02-02329	1545	
21-03-03-02-02330	1556	
21-03-03-02-02331	1530	
21-03-03-02-02332	1509	E4-A-00018
21-03-03-02-02333	1513	
21-03-03-02-02334	1508	
21-03-03-02-02335	1697	
21-03-03-02-02336	1520	
21-03-03-02-02337	1537	
21-03-03-02-02339	1528	
21-03-03-02-02340	1578	
21-03-03-02-02341	1548	
21-03-03-02-02342	1565	
21-03-03-02-02343	1726	
21-03-03-02-02344	1569	
21-03-03-02-02345	1571	
21-03-03-02-02346	1511	E4-C-00088
21-03-03-02-02347	1665	
21-03-03-02-02349	1541	
21-03-03-02-02350	1550	E4-A-06100
21-03-03-02-02351	1480	
21-03-03-02-02352	1748	
21-03-03-02-02353	1531	
21-03-03-02-02354	1554	
21-03-03-02-02355	1618	
21-03-03-02-02356	1576	
21-03-03-02-02357	1486	
21-03-03-02-02358	1568	
21-03-03-02-02359	1580	
21-03-03-02-02360	1507	
21-03-03-02-02361	1567	
21-03-03-02-02362	1638	
21-03-03-02-02363	1586	
21-03-03-02-02364	1470	
21-03-03-02-02365	1577	E4-C-06077
21-03-03-02-02366	1473	
21-03-03-02-02367	1558	
21-03-03-02-02369	1555	
21-03-03-02-02370	1823	
21-03-03-02-02371	1559	
21-03-03-02-02372	1579	
21-03-03-02-02373	1440	E4-A-06097

First Issue Date			Rev. No.	Revision Date			Page
11	Aug	2021	2	10	09	2021	6-19



**Mandatory Service Bulletin**  
**No. MSB-E4-034/2**

Austro Engine GmbH  
 Rudolf-Diesel-Strasse 11  
 A-2700 Wiener Neustadt  
 Tel: +43 2622 23000  
 FAX: +43 2622 23000-2711

High Pressure Pump S/N	Gear S/N	Engine S/N
20-03-04-02-00034	0313	
20-03-04-02-00035	0342	
20-03-04-02-00036	0308	
20-03-04-02-00037	0418	
20-03-04-02-00038	0400	E4-C-05124
20-03-04-02-00039	0500	E4P-C-06012
20-03-04-02-00040	0535	E4P-C-06006
20-03-04-02-00041	0437	
20-03-04-02-00042	0543	
20-03-04-02-00043	0473	
20-03-04-02-00044	0494	E4-C-06007
20-03-04-02-00045	0340	
20-03-04-02-00046	0515	
20-03-04-02-00047	0498	
20-03-04-02-00048	0588	
20-03-04-02-00049	0478	
20-03-04-02-00050	0541	
20-03-04-02-00051	0448	E4P-C-06002
20-03-04-02-00052	0519	E4-A-06003
20-03-04-02-00053	0495	
20-03-04-02-00054	0483	
20-03-04-02-00055	0389	
20-03-04-02-00057	0518	
20-03-04-02-00058	0506	
20-03-04-02-00059	0505	
20-03-04-02-00060	0464	
20-03-04-02-00061	0456	E4-A-06005
20-03-04-02-00062	0499	
20-03-04-02-00063	0532	
20-03-04-02-00064	0436	E4P-C-06003
20-03-04-02-00065	0427	
20-03-04-02-00066	0493	E4-A-06012
20-03-04-02-00068	0564	
20-03-04-02-00071	0458	E4P-C-06005
20-03-04-02-00072	0474	
20-03-04-02-00073	0513	E4-A-06007
20-03-04-02-00074	0534	
20-03-04-02-00075	0533	E4P-C-06004
20-03-04-02-00076	0508	E4P-C-06001
20-03-04-02-00078	0501	
20-03-04-02-00079	0610	E4-A-06017
20-03-04-02-00081	0481	
20-03-04-02-00082	0509	
20-03-04-02-00083	0488	E4-A-06002
20-03-04-02-00085	0438	
20-03-04-02-00086	0517	E4-A-06004
20-03-04-02-00088	0521	
20-03-04-02-00089	0457	
20-03-04-02-00091	0526	
20-03-31-02-00182	0624	
20-03-31-02-00183	0681	
20-03-31-02-00184	0568	
20-03-31-02-00185	0525	
20-03-31-02-00186	0687	
20-03-31-02-00187	0584	
20-03-31-02-00188	0689	
20-03-31-02-00189	0576	
20-03-31-02-00190	0609	
20-03-31-02-00191	0605	
20-03-31-02-00192	0618	
20-03-31-02-00193	0679	E4P-C-06007

High Pressure Pump S/N	Gear S/N	Engine S/N
20-08-21-02-00648	1231	
20-08-21-02-00649	1267	E4-A-06053
20-08-21-02-00650	1212	
20-08-21-02-00651	1235	
20-08-21-02-00652	1226	E4-A-00244
20-08-21-02-00653	1369	
20-08-21-02-00654	1351	E4-C-00118
20-08-21-02-00655	1385	E4-C-00243
20-08-21-02-00656	0747	
20-08-21-02-00657	1264	E4-A-06064
20-08-21-02-00659	1222	E4-C-06060
20-08-21-02-00660	1208	
20-08-21-02-00661	1390	E4-C-06069
20-08-21-02-00662	1255	E4-A-06072
20-08-21-02-00663	1388	E4-A-00514
20-08-21-02-00664	1290	E4-C-06051
20-08-21-02-00665	1225	E4-A-06074
20-08-21-02-00666	1391	E4-A-00192
20-08-21-02-00667	1215	
20-08-21-02-00668	1299	E4P-C-06036
20-08-21-02-00669	1193	
20-08-21-02-00670	1361	
20-08-21-02-00671	1300	E4P-C-06037
20-08-21-02-00672	1219	
20-08-21-02-00673	1198	
20-08-21-02-00674	1213	E4-C-06063
20-08-21-02-00675	1196	
20-08-21-02-00676	1362	E4P-C-06045
20-08-21-02-00677	1354	
20-08-21-02-00678	1291	E4-A-06056
20-08-21-02-00679	1249	
20-08-21-02-00680	1263	
20-08-21-02-00681	1313	
20-08-21-02-00682	1216	
20-08-21-02-00683	1347	
20-08-21-02-00684	1381	
20-08-21-02-00685	1259	E4-C-06040
20-08-21-02-00686	1311	E4-A-06066
20-08-21-02-00687	1227	E4P-C-06043
20-08-21-02-00688	1281	
20-08-21-02-00689	1271	
20-08-21-02-00690	0581	
20-08-21-02-00691	1279	E4-A-06063
20-08-21-02-00692	1254	E4-C-06045
20-08-21-02-00693	1258	
20-08-21-02-00694	1283	
20-08-21-02-00695	1277	E4-A-06070
20-08-21-02-00696	1238	E4-C-00138
20-08-21-02-00697	1261	
20-08-21-02-00698	0824	
20-08-21-02-00699	1302	E4P-C-06039
20-08-21-02-00700	1307	E4-C-06039
20-08-21-02-00701	1284	E4P-C-06035
20-08-21-02-00702	1252	E4-B-00202
20-08-21-02-00703	1268	
20-08-21-02-00704	1244	E4-A-06069
20-08-21-02-00705	1296	E4-A-06071
20-08-21-02-00706	1276	
20-08-21-02-00707	1247	
20-08-21-02-00708	1240	
20-08-21-02-00709	1275	

High Pressure Pump S/N	Gear S/N	Engine S/N
21-03-03-02-02374	1692	
21-03-03-02-02375	1573	
21-03-03-02-02376	1549	
21-03-03-02-02377	1647	
21-03-03-02-02379	1582	E4P-C-06053
21-03-03-02-02380	1560	
21-03-03-02-02381	1428	E4-A-06089
21-03-03-02-02382	1574	
21-03-03-02-02384	1563	
21-03-03-02-02385	1441	
21-03-03-02-02386	1358	E4-A-06098
21-03-03-02-02387	1506	
21-03-03-02-02388	1589	E4-C-06075
21-03-03-02-02389	1572	E4-C-06080
21-03-03-02-02390	1581	
21-03-03-02-02391	1551	
21-03-03-02-02392	1557	E4P-C-06054
21-03-03-02-02393	1474	
21-03-03-02-02394	1564	E4P-C-06052
21-03-03-02-02395	1540	
21-03-03-02-02396	1553	
21-03-03-02-02397	1561	
21-03-03-02-02398	1488	
21-03-03-02-02399	1456	
21-03-03-02-02400	1657	
21-03-03-02-02401	1706	
21-03-03-02-02402	1713	
21-03-03-02-02403	1840	
21-03-03-02-02404	1907	
21-03-03-02-02405	1810	
21-03-03-02-02406	1828	
21-03-03-02-02407	1752	
21-03-03-02-02408	1325	
21-03-03-02-02409	1829	
21-03-03-02-02410	1822	
21-03-03-02-02411	1707	
21-03-03-02-02412	1742	
21-03-03-02-02414	1850	
21-03-03-02-02415	1562	
21-03-03-02-02416	1841	
21-03-03-02-02417	1658	
21-03-03-02-02418	1629	
21-03-03-02-02419	1813	
21-04-08-02-00592	1722	
21-04-08-02-00593	1610	
21-04-08-02-00594	1671	
21-04-08-02-00595	1593	
21-04-08-02-00596	1591	
21-04-08-02-00597	1724	
21-04-08-02-00598	1769	
21-04-08-02-00599	1702	
21-04-08-02-00600	1597	
21-04-08-02-00601	1602	
21-04-08-02-00602	1603	
21-04-08-02-00603	1614	E4-A-06104
21-04-08-02-00604	1672	
21-04-08-02-00605	1640	
21-04-08-02-00606	1599	
21-04-08-02-00607	1694	
21-04-08-02-00608	1595	
21-04-08-02-00609	1617	

First Issue Date			Rev. No.	Revision Date			Page
11	Aug	2021	2	10	09	2021	7-19



**Mandatory Service Bulletin**  
**No. MSB-E4-034/2**

Austro Engine GmbH  
 Rudolf-Diesel-Strasse 11  
 A-2700 Wiener Neustadt  
 Tel: +43 2622 23000  
 FAX: +43 2622 23000-2711

High Pressure Pump S/N	Gear S/N	Engine S/N
20-03-31-02-00194	0663	
20-03-31-02-00195	0596	
20-03-31-02-00196	0655	
20-03-31-02-00197	0475	
20-03-31-02-00198	0636	
20-03-31-02-00199	0695	E4-A-00498
20-03-31-02-00200	0551	
20-03-31-02-00201	0552	E4-A-06015
20-03-31-02-00202	0546	
20-03-31-02-00203	0672	
20-03-31-02-00204	0482	
20-03-31-02-00205	0567	
20-03-31-02-00206	0649	
20-03-31-02-00207	0677	
20-03-31-02-00208	0512	
20-03-31-02-00209	0587	
20-03-31-02-00210	0560	
20-03-31-02-00211	0562	
20-03-31-02-00212	0952	
20-03-31-02-00213	0659	
20-03-31-02-00214	0660	
20-03-31-02-00216	0601	
20-03-31-02-00217	0586	
20-03-31-02-00218	0459	
20-03-31-02-00219	0565	
20-03-31-02-00220	0558	
20-03-31-02-00221	0684	
20-03-31-02-00222	0654	
20-03-31-02-00223	0595	
20-03-31-02-00224	0553	
20-03-31-02-00225	0544	
20-03-31-02-00226	0656	
20-03-31-02-00227	0575	
20-03-31-02-00228	0642	
20-03-31-02-00229	0617	
20-03-31-02-00230	0599	
20-03-31-02-00231	0666	
20-03-31-02-00232	0580	
20-03-31-02-00233	0592	
20-03-31-02-00234	0572	
20-03-31-02-00235	0904	E4P-C-06018
20-03-31-02-00236	0971	E4-A-06041
20-03-31-02-00237	0549	
20-03-31-02-00238	0594	
20-03-31-02-00239	0569	
20-03-31-02-00240	0668	
20-03-31-02-00241	0692	
20-03-31-02-00242	0496	
20-03-31-02-00243	0676	
20-03-31-02-00244	0693	
20-03-31-02-00245	0566	
20-03-31-02-00246	0593	E4-A-00219
20-03-31-02-00248	0653	
20-03-31-02-00249	0614	E4-C-00069
20-03-31-02-00250	0619	E4-C-00172
20-03-31-02-00251	0669	
20-03-31-02-00252	0635	
20-03-31-02-00253	0638	
20-03-31-02-00254	0637	E4-A-06022
20-03-31-02-00255	0608	
20-03-31-02-00256	0442	

High Pressure Pump S/N	Gear S/N	Engine S/N
20-08-21-02-00710	1251	
20-08-21-02-00711	1287	E4-A-06062
20-08-21-02-00712	1272	
20-08-21-02-00713	1297	
20-08-21-02-00714	1242	
20-08-21-02-00715	1295	E4-C-06038
20-08-21-02-00716	1289	
20-08-21-02-00717	0691	
20-08-21-02-00718	1303	E4P-C-06034
20-08-21-02-00719	0799	
20-08-21-02-00720	0818	
20-08-21-02-00721	1314	E4-C-06052
20-08-21-02-00722	0735	
20-08-21-02-00723	0808	
20-08-21-02-00724	0757	
20-08-21-02-00725	0574	E4P-C-00051
20-08-21-02-00726	0709	
20-09-02-02-00424	0657	
20-09-02-02-00425	0774	
20-09-02-02-00426	0776	
20-09-02-02-00427	0787	E4-A-06029
20-09-02-02-00428	0590	
20-09-02-02-00429	0620	E4-A-06023
20-09-02-02-00430	0640	E4-B-00297
20-09-02-02-00431	0578	E4-A-00046
20-09-02-02-00433	0823	
20-09-02-02-00434	0764	
20-09-02-02-00435	0817	
20-09-02-02-00436	0604	E4-C-06011
20-09-02-02-00437	0665	
20-09-02-02-00438	0648	E4-A-06028
20-09-02-02-00439	1980	
20-09-02-02-00440	0616	
20-09-02-02-00441	0786	
20-09-02-02-00442	0573	
20-09-02-02-00443	0838	
20-09-02-02-00444	0855	
20-09-02-02-00445	0545	E4-B-00433
20-09-02-02-00446	0628	
20-09-02-02-00447	0615	E4-B-00417
20-09-02-02-00448	0662	E4-A-06026
20-09-02-02-00449	0591	E4-C-00092
20-09-02-02-00450	0772	
20-09-02-02-00451	0804	
20-09-02-02-00452	0626	E4-A-06019
20-09-02-02-00453	0740	
20-09-02-02-00454	0742	
20-09-02-02-00455	0554	E4-A-06018
20-09-02-02-00456	0694	
20-09-02-02-00457	0612	E4-A-00111
20-09-02-02-00458	0763	
20-09-02-02-00459	0579	E4-C-06009
20-09-02-02-00460	0791	
20-09-02-02-00461	0765	
20-09-02-02-00462	0606	E4-C-06012
20-09-02-02-00463	0607	E4-A-06020
20-09-02-02-00464	0627	
20-09-02-02-00465	0746	
20-09-02-02-00466	0775	E4-A-00484
20-09-02-02-00467	0767	
20-09-02-02-00468	0623	E4-C-00171

High Pressure Pump S/N	Gear S/N	Engine S/N
21-04-08-02-00610	1611	
21-04-08-02-00611	1656	
21-04-08-02-00612	1728	
21-04-08-02-00613	1605	
21-04-08-02-00614	1757	
21-04-08-02-00615	1826	
21-04-08-02-00616	1649	
21-04-08-02-00617	1880	
21-04-08-02-00618	1607	
21-04-08-02-00619	1807	
21-04-08-02-00620	1613	
21-04-08-02-00621	1612	
21-04-08-02-00622	1616	
21-04-08-02-00623	1767	
21-04-08-02-00624	1723	
21-04-08-02-00625	1721	
21-04-08-02-00626	1598	
21-04-08-02-00627	1625	
21-04-08-02-00628	1639	
21-04-08-02-00629	1729	
21-04-08-02-00630	1615	
21-04-08-02-00631	1667	
21-04-08-02-00632	1825	
21-04-08-02-00633	1583	
21-04-08-02-00634	1645	
21-04-08-02-00635	1594	
21-04-08-02-00636	1716	
21-04-08-02-00637	1628	
21-04-08-02-00638	1646	
21-04-08-02-00639	1584	
21-04-08-02-00640	1689	
21-04-08-02-00641	1596	
21-04-08-02-00644	1703	
21-04-08-02-00645	1630	
21-04-08-02-00646	1674	
21-04-08-02-00647	1680	
21-04-08-02-00648	1746	
21-04-08-02-00649	1623	
21-04-08-02-00650	1749	
21-04-08-02-00652	1727	
21-04-08-02-00653	1740	
21-04-08-02-00654	1609	
21-04-08-02-00655	1720	
21-04-08-02-00656	1624	
21-04-08-02-00657	1608	
21-04-08-02-00658	1675	
21-04-08-02-00659	1676	
21-04-08-02-00660	1604	
21-04-08-02-00661	1641	
21-04-08-02-00662	1759	
21-04-08-02-00663	1683	
21-04-08-02-00664	1670	
21-04-08-02-00665	1648	
21-04-08-02-00666	1606	
21-04-08-02-00667	1622	
21-04-08-02-00668	1696	
21-04-08-02-00669	1650	
21-04-08-02-00670	1621	
21-04-08-02-00671	1642	
21-04-08-02-00672	1636	
21-04-08-02-00673	1654	

First Issue Date			Rev. No.	Revision Date			Page
11	Aug	2021	2	10	09	2021	8-19



**Mandatory Service Bulletin**  
**No. MSB-E4-034/2**

Austro Engine GmbH  
 Rudolf-Diesel-Strasse 11  
 A-2700 Wiener Neustadt  
 Tel: +43 2622 23000  
 FAX: +43 2622 23000-2711

High Pressure Pump S/N	Gear S/N	Engine S/N
20-03-31-02-00257	0645	E4-A-00509
20-03-31-02-00258	0744	
20-03-31-02-00259	0598	E4-C-06014
20-03-31-02-00260	0634	
20-03-31-02-00261	0688	
20-03-31-02-00262	0555	E4-A-06016
20-03-31-02-00263	0651	
20-03-31-02-00264	0795	E4-A-05097
20-03-31-02-00265	0658	
20-03-31-02-00266	0611	
20-03-31-02-00267	0602	E4-C-06013
20-03-31-02-00268	0582	
20-03-31-02-00269	0675	E4-C-06015
20-03-31-02-00270	0583	
20-03-31-02-00271	0773	
20-03-31-02-00272	0819	
20-03-31-02-00273	0643	
20-03-31-02-00274	0777	
20-03-31-02-00275	0577	
20-03-31-02-00276	0816	
20-03-31-02-00277	0728	
20-03-31-02-00278	0685	E4-C-00480
20-03-31-02-00279	0831	
20-03-31-02-00280	0794	
20-03-31-02-00281	0811	
20-03-31-02-00282	0845	
20-03-31-02-00283	0731	
20-03-31-02-00284	0771	
20-03-31-02-00285	0707	
20-03-31-02-00286	0727	
20-03-31-02-00287	0790	
20-03-31-02-00288	0853	
20-03-31-02-00289	0696	E4-A-05094
20-03-31-02-00290	0778	
20-03-31-02-00291	0760	
20-03-31-02-00292	0846	
20-03-31-02-00293	0770	E4-A-00028
20-03-31-02-00294	0751	
20-03-31-02-00295	0761	
20-03-31-02-00296	0759	
20-03-31-02-00297	0755	
20-03-31-02-00298	0725	
20-03-31-02-00299	0812	
20-03-31-02-00300	0797	
20-03-31-02-00301	0851	
20-03-31-02-00302	0737	
20-03-31-02-00303	0828	
20-03-31-02-00304	0705	
20-03-31-02-00305	0739	
20-03-31-02-00306	0842	
20-03-31-02-00307	0822	E4-B-00173
20-03-31-02-00308	0780	
20-03-31-02-00309	0781	
20-03-31-02-00310	0796	
20-03-31-02-00311	0801	
20-03-31-02-00312	0708	
20-03-31-02-00313	0826	
20-03-31-02-00314	0726	
20-03-31-02-00315	0700	
20-03-31-02-00316	0749	
20-05-14-02-00002	0922	

High Pressure Pump S/N	Gear S/N	Engine S/N
20-09-02-02-00469	0621	E4-A-06027
20-09-02-02-00470	0597	
20-09-02-02-00471	0603	
20-09-02-02-00472	0646	E4-A-00106
20-09-02-02-00473	0633	
20-09-02-02-00474	0613	
20-09-02-02-00475	0678	E4-A-00107
20-09-02-02-00476	0745	
20-09-02-02-00477	0753	
20-09-02-02-00478	0800	
20-09-02-02-00479	0630	
20-09-02-02-00480	0847	
20-09-02-02-00481	0809	
20-09-02-02-00482	0785	
20-09-02-02-00483	0835	
20-09-02-02-00484	0652	E4-C-06008
20-09-02-02-00485	0667	
20-09-02-02-00486	0670	
20-09-02-02-00487	0706	
20-09-02-02-00488	0650	
20-09-02-02-00489	0768	
20-09-02-02-00490	0680	
20-09-02-02-00491	0673	
20-09-02-02-00492	0589	E4-C-06010
20-09-02-02-00493	0829	
20-09-02-02-00494	0807	
20-09-02-02-00495	0784	
20-09-02-02-00496	0629	
20-09-02-02-00497	0754	
20-09-02-02-00498	0682	E4-A-00166
20-09-02-02-00499	0782	
20-10-19-02-00442	1853	
20-10-19-02-00443	1814	
20-10-19-02-00444	1878	
20-10-19-02-00445	1872	
20-10-19-02-00446	1875	
20-10-19-02-00447	1918	
20-10-19-02-00448	1780	
20-10-19-02-00449	1815	
20-10-19-02-00450	1787	
20-10-19-02-00452	1793	
20-10-19-02-00453	1889	
20-10-19-02-00454	1854	
20-10-19-02-00455	1792	
20-10-19-02-00456	1809	
20-10-19-02-00457	1796	
20-10-19-02-00458	1778	
20-10-19-02-00459	1827	
20-10-19-02-00460	1926	
20-10-19-02-00461	1979	
20-10-19-02-00462	1777	
20-10-19-02-00463	0919	
20-10-19-02-00464	0940	E4-A-00038
20-10-19-02-00465	1805	
20-10-19-02-00466	1981	
20-10-19-02-00467	1975	
20-10-19-02-00468	1786	
20-10-19-02-00469	1819	
20-10-19-02-00470	1869	
20-10-19-02-00471	1866	
20-10-19-02-00472	1293	E4P-C-06032

High Pressure Pump S/N	Gear S/N	Engine S/N
21-04-08-02-00674	1669	
21-04-08-02-00675	1753	
21-04-08-02-00676	1686	
21-04-08-02-00677	1859	
21-04-08-02-00678	1634	
21-04-08-02-00679	1698	
21-04-08-02-00680	1718	
21-04-08-02-00681	1619	
21-04-08-02-00682	1652	
21-04-08-02-00683	1687	
21-04-08-02-00684	1708	
21-04-08-02-00685	1661	
21-04-08-02-00686	1803	
21-04-08-02-00687	1693	
21-04-08-02-00688	1704	
21-04-08-02-00689	1750	
21-04-08-02-00690	1651	
21-04-08-02-00691	1865	
21-04-08-02-00692	1802	
21-04-08-02-00693	1856	
21-04-08-02-00694	1643	
21-04-08-02-00695	1644	
21-04-08-02-00696	1710	
21-04-08-02-00697	1620	
21-04-08-02-00698	1715	
21-04-08-02-00699	1673	
21-04-08-02-00700	1601	
21-04-08-02-00701	1758	
21-04-08-02-00702	1679	
21-04-08-02-00703	1877	
21-04-08-02-00704	1668	
21-04-08-02-00705	1739	
21-04-08-02-00706	1886	
21-04-08-02-00707	1868	
21-04-08-02-00708	1632	
21-04-08-02-00709	1627	
21-04-08-02-00710	1754	
21-04-08-02-00711	1660	
21-04-08-02-00712	1705	
21-04-08-02-00713	1631	
21-04-08-02-00714	1857	
21-04-08-02-00715	1685	
21-04-08-02-00716	1653	
21-04-08-02-00717	1677	
21-04-08-02-00718	1760	
21-04-08-02-00719	1678	
21-04-08-02-00720	1862	
21-04-08-02-00721	1695	
21-04-08-02-00722	1908	
21-04-08-02-00723	1911	
21-04-08-02-00724	1794	
21-04-08-02-00725	1684	
21-04-08-02-00726	1633	
21-04-08-02-00727	1784	
21-04-08-02-00728	1883	
21-04-08-02-00729	1871	
21-04-08-02-00730	1804	
21-04-08-02-00731	1783	
21-04-08-02-00732	1768	
21-04-08-02-00733	1682	
21-04-08-02-00734	1776	

First Issue Date			Rev. No.	Revision Date			Page
11	Aug	2021	2	10	09	2021	9-19



**Mandatory Service Bulletin**  
**No. MSB-E4-034/2**

Austro Engine GmbH  
 Rudolf-Diesel-Strasse 11  
 A-2700 Wiener Neustadt  
 Tel: +43 2622 23000  
 FAX: +43 2622 23000-2711

High Pressure Pump S/N	Gear S/N	Engine S/N
20-05-14-02-00003	0875	
20-05-14-02-00004	0935	
20-05-14-02-00005	0879	E4-A-06043
20-05-14-02-00006	0905	E4P-C-06016
20-05-14-02-00007	0934	
20-05-14-02-00008	0933	
20-05-14-02-00009	0965	
20-05-14-02-00010	0884	E4-A-06045
20-05-14-02-00011	0908	E4-A-00239
20-05-14-02-00012	0949	E4-C-06022
20-05-14-02-00013	0954	E4-A-06037
20-05-14-02-00014	0928	E4P-C-06015
20-05-14-02-00015	0962	
20-05-14-02-00016	0955	
20-05-14-02-00017	0959	
20-05-14-02-00018	0932	
20-05-14-02-00019	0906	E4-C-06025
20-05-14-02-00020	0972	
20-05-14-02-00021	0874	E4-B-00434
20-05-14-02-00022	0920	E4-A-06040
20-05-14-02-00023	0938	E4P-C-06021
20-05-14-02-00024	0899	
20-05-14-02-00025	0988	
20-05-14-02-00026	0903	
20-05-14-02-00027	0957	
20-05-14-02-00028	0876	
20-05-14-02-00029	0978	E4-A-06042
20-05-14-02-00030	1005	
20-05-14-02-00031	0951	
20-05-14-02-00032	0969	E4-C-06023
20-05-14-02-00033	0961	E4-C-06028
20-05-14-02-00034	0950	
20-05-14-02-00035	0909	E4-C-00312
20-05-14-02-00036	0921	E4-C-06021
20-05-14-02-00037	0897	
20-05-14-02-00038	0943	E4-A-00142
20-05-14-02-00039	0882	E4-C-06020
20-05-14-02-00040	0902	E4-A-06044
20-05-14-02-00041	0870	E4-C-06026
20-05-14-02-00042	0982	
20-05-14-02-00043	0953	E4-A-06038
20-05-14-02-00044	0996	
20-05-14-02-00045	0924	
20-05-14-02-00046	0936	E4-A-00350
20-05-14-02-00047	0923	
20-05-14-02-00048	0958	E4P-C-06022
20-05-14-02-00049	0892	E4-A-00200
20-05-14-02-00050	0887	E4-A-06039
20-05-14-02-00051	0973	
20-05-14-02-00052	1009	
20-05-14-02-00053	0956	E4-B-00049
20-05-14-02-00054	0976	
20-05-14-02-00055	0964	E4-C-06027
20-05-14-02-00056	1068	
20-05-14-02-00057	0992	
20-05-14-02-00058	0900	E4-B-00196
20-05-14-02-00059	0991	
20-05-14-02-00060	1025	
20-05-14-02-00061	1063	
20-05-14-02-00062	0987	
20-05-14-02-00063	0994	

High Pressure Pump S/N	Gear S/N	Engine S/N
20-10-19-02-00473	1308	E4-A-06054
20-10-19-02-00474	1199	
20-10-19-02-00475	1800	
20-10-19-02-00477	1915	
20-10-19-02-00478	1906	
20-10-19-02-00479	1863	
20-10-19-02-00480	1782	
20-10-19-02-00481	1860	
20-10-19-02-00482	1939	
20-10-19-02-00485	1808	
20-10-19-02-00486	1798	
20-10-19-02-00487	0881	
20-10-19-02-00488	1774	
20-10-19-02-00489	1943	
20-10-19-02-00490	1995	
20-10-19-02-00491	1884	
20-10-19-02-00492	0883	E4-A-00019
20-10-19-02-00493	0886	E4-A-06032
20-10-19-02-00494	0888	
20-10-19-02-00495	0865	E4-A-05096
20-10-19-02-00496	0926	
20-10-19-02-00497	0702	E4-A-05095
20-10-19-02-00498	1948	
20-10-19-02-00499	0916	E4-A-06034
20-10-19-02-00500	0915	E4-A-00434
20-10-19-02-00501	0880	E4P-C-06009
20-10-19-02-00502	0701	
20-10-19-02-00503	0872	
20-10-19-02-00504	0896	E4-C-06017
20-10-19-02-00505	1789	
20-10-19-02-00506	0894	E4P-C-06014
20-10-19-02-00507	0925	E4P-C-06013
20-10-19-02-00508	0907	E4-C-06016
20-10-19-02-00510	0939	E4-B-00109
20-10-19-02-00511	1933	
20-10-19-02-00512	0868	
20-10-19-02-00513	0866	E4-A-06033
20-10-19-02-00514	0945	
20-10-19-02-00515	0901	E4-A-06035
20-10-19-02-00516	0857	E4-A-00429
20-10-19-02-00517	0937	
20-10-19-02-00518	0871	E4-C-00087
20-10-19-02-00519	0859	
20-10-19-02-00521	0944	E4P-C-05014
20-10-19-02-00522	0913	
20-10-19-02-00523	0893	
20-10-19-02-00524	0869	E4-C-06019
20-10-19-02-00525	0890	
20-10-19-02-00526	0806	
20-10-19-02-00527	0850	
20-10-19-02-00528	1315	E4-C-06053
20-10-19-02-00529	0863	
20-10-19-02-00530	0914	
20-10-19-02-00531	1301	E4-A-06075
20-10-19-02-00532	0931	E4-A-00215
20-10-19-02-00533	0758	E4P-Z-06001
20-10-19-02-00534	0858	E4-C-00125
20-10-19-02-00535	0730	E4-A-05093
20-10-19-02-00536	0941	
20-10-19-02-00537	0843	
20-10-19-02-00538	0837	

High Pressure Pump S/N	Gear S/N	Engine S/N
21-04-08-02-00735	1788	
21-04-08-02-00736	1655	
21-05-10-02-00002	1711	
21-05-10-02-00003	1876	
21-05-10-02-00004	1712	
21-05-10-02-00006	1719	
21-05-10-02-00008	1761	
21-05-10-02-00012	1663	
21-05-10-02-00013	1893	
21-05-10-02-00016	1833	
21-05-10-02-00018	1900	
21-05-10-02-00019	1662	
21-05-10-02-00020	1894	
21-05-10-02-00021	1842	
21-05-10-02-00023	1836	
21-05-10-02-00024	1896	
21-05-10-02-00025	1905	
21-05-10-02-00026	1897	
21-05-10-02-00031	1892	
21-05-10-02-00034	1795	
21-05-10-02-00038	1912	
21-05-10-02-00043	1763	
21-05-10-02-00047	1831	
21-05-10-02-00048	1733	
21-05-10-02-00050	1744	
21-05-10-02-00052	1635	
21-05-10-02-00053	1910	
21-05-10-02-00054	1891	
21-05-10-02-00056	1709	
21-05-10-02-00057	1824	
21-05-10-02-00058	1770	
21-05-10-02-00059	1755	
21-05-10-02-00060	1681	
21-05-10-02-00062	1747	
21-05-10-02-00063	1843	
21-05-10-02-00064	1731	
21-05-10-02-00065	1844	
21-05-10-02-00067	1771	
21-05-10-02-00068	1812	
21-05-10-02-00069	1902	
21-05-10-02-00072	1821	
21-05-10-02-00073	1839	
21-05-10-02-00074	1870	
21-05-10-02-00075	1895	
21-05-10-02-00076	1882	
21-05-10-02-00077	1879	
21-05-10-02-00078	1848	
21-05-10-02-00079	1717	
21-05-10-02-00080	1874	
21-05-10-02-00081	1790	
21-05-10-02-00082	1835	
21-05-10-02-00083	1909	
21-05-10-02-00084	1765	
21-05-10-02-00085	1834	
21-05-10-02-00086	1847	
21-05-10-02-00087	1626	
21-05-10-02-00088	1913	
21-05-10-02-00090	1888	
21-05-10-02-00091	1691	
21-05-10-02-00092	1917	
21-05-10-02-00093	1690	

First Issue Date			Rev. No.	Revision Date			Page
11	Aug	2021	2	10	09	2021	10-19





**Mandatory Service Bulletin**  
**No. MSB-E4-034/2**


Austro Engine GmbH  
Rudolf-Diesel-Strasse 11  
A-2700 Wiener Neustadt  
Tel: +43 2622 23000  
FAX: +43 2622 23000-2711

High Pressure Pump S/N	Gear S/N	Engine S/N
20-05-14-02-00064	0947	
20-05-14-02-00065	1054	
20-05-14-02-00066	1111	
20-05-14-02-00067	0997	
20-05-14-02-00068	1057	E4-A-06048
20-05-14-02-00069	0984	
20-05-14-02-00070	1055	
20-05-14-02-00071	0981	
20-05-14-02-00072	0980	
20-05-14-02-00073	0977	E4-A-06049
20-05-14-02-00074	0993	
20-05-14-02-00075	0986	
20-05-14-02-00076	1007	
20-05-14-02-00077	0963	
20-05-14-02-00078	0983	
20-05-14-02-00079	1003	
20-05-14-02-00080	1000	
20-05-14-02-00081	0989	
20-05-14-02-00082	0998	
20-05-14-02-00083	1002	
20-05-14-02-00084	0995	
20-05-14-02-00085	0960	
20-05-15-02-00420	0548	
20-05-15-02-00421	1010	
20-05-15-02-00422	0975	
20-05-15-02-00423	0990	
20-05-15-02-00424	0999	
20-05-15-02-00425	0970	
20-05-15-02-00426	1008	
20-05-15-02-00430	0967	
20-05-15-02-00432	0968	
20-06-18-02-00879	1076	
20-06-18-02-00880	0813	
20-06-18-02-00881	1014	E4P-C-06023
20-06-18-02-00882	1078	E4P-C-06024
20-06-18-02-00883	1092	E4P-C-06025
20-06-18-02-00884	1090	
20-06-18-02-00885	1019	E4-C-06034
20-06-18-02-00886	1091	E4-B-00383
20-06-18-02-00887	1077	
20-06-18-02-00888	0639	

High Pressure Pump S/N	Gear S/N	Engine S/N
20-10-19-02-00539	1274	E4-C-00199
20-10-19-02-00540	1236	E4-A-00075
20-10-19-02-00541	1278	E4P-C-06033
20-10-19-02-00542	0798	
20-10-19-02-00544	1292	E4P-C-06040
20-10-19-02-00545	1260	E4-A-00279
20-10-19-02-00546	1269	
20-10-19-02-00547	1273	
20-10-19-02-00548	1214	
20-10-19-02-00549	1288	E4-A-06067
20-10-19-02-00550	1270	E4-A-06073
20-10-19-02-00551	1243	E4-C-06049
20-10-19-02-00552	1217	
20-10-19-02-00553	1229	E4-C-06062
20-10-19-02-00554	1256	
20-10-19-02-00555	1282	
20-10-19-02-00556	1246	
20-10-19-02-00558	1220	
20-10-19-02-00559	1207	E4-A-00513
20-10-19-02-00560	1286	E4-C-06050
20-10-19-02-00561	1228	
20-10-19-02-00562	1401	
20-10-19-02-00563	1298	E4-A-06055
20-10-19-02-00564	1334	E4P-C-06046
20-10-19-02-00565	1201	E4-C-06061
20-10-19-02-00566	1237	E4P-C-06030
20-10-19-02-00567	1234	
20-10-19-02-00568	1190	
20-10-19-02-00569	1285	E4-A-06051
20-10-19-02-00570	1230	
20-10-19-02-00571	1202	
20-10-19-02-00572	1205	E4P-C-06042
20-10-19-02-00573	1204	E4-A-00441
20-10-19-02-00574	1194	
20-10-19-02-00575	1206	
20-10-26-02-00622	1791	
20-10-26-02-00623	1959	
20-10-26-02-00624	1806	
20-10-26-02-00625	1797	
20-10-26-02-00626	1934	
20-10-26-02-00627	1210	

High Pressure Pump S/N	Gear S/N	Engine S/N
21-05-10-02-00094	1849	
21-05-10-02-00095	1914	
21-05-10-02-00096	1756	
21-05-10-02-00097	1820	
21-05-10-02-00098	1838	
21-05-10-02-00099	1743	
21-05-10-02-00100	1801	
21-05-10-02-00101	1851	
21-05-10-02-00102	1688	
21-05-10-02-00103	1735	
21-05-10-02-00104	1885	
21-05-10-02-00105	1899	
21-05-10-02-00106	1858	
21-05-10-02-00107	1736	
21-05-10-02-00108	1772	
21-05-10-02-00109	1764	
21-05-10-02-00110	1867	
21-05-10-02-00111	1855	
21-05-10-02-00112	1734	
21-05-10-02-00113	1762	
21-05-10-02-00114	1852	
21-05-10-02-00115	1832	
21-05-10-02-00116	1898	
21-05-10-02-00117	1901	
21-05-10-02-00118	1659	
21-05-10-02-00119	1864	
21-05-10-02-00120	1919	
21-05-10-02-00121	1730	
21-05-10-02-00122	1732	
21-05-10-02-00123	1741	
21-05-10-02-00124	1861	
21-05-10-02-00125	1916	
21-05-10-02-00126	1845	
21-05-10-02-00127	1766	
21-05-10-02-00129	1738	
21-05-10-02-00130	1714	
21-05-10-02-00131	1737	
21-05-10-02-00132	1904	
21-05-10-02-00133	1745	
21-05-10-02-00134	1920	
21-05-10-02-00135	1873	

First Issue Date			Rev. No.	Revision Date			Page
11	Aug	2021	2	10	09	2021	11-19

	<p>Mandatory Service Bulletin No. MSB-E4-034/2</p>	<p>Austro Engine GmbH Rudolf-Diesel-Strasse 11 A-2700 Wiener Neustadt Tel: +43 2622 23000 FAX: +43 2622 23000-2711</p>
---	--	--

#### 1.4. REASON

Excessive use of an assembly tool p/n AE300T012-1 which could lead to gear pre-damage during assembly. This condition, if not corrected, could result in premature failure of the pump drive gear resulting in rail pressure loss and engine shutdown.

#### 1.5. TIME OF COMPLIANCE

- For E4A engines
- Before the total time in service of the affected driving gear reaches 40 FH<sup>(1)</sup>, or
  - during the next scheduled maintenance, whichever occurs first.
- For E4B/C/P engines
- Before the total time in service of the affected driving gear reaches 80 FH<sup>(1)</sup>, or
  - during the next scheduled maintenance, whichever occurs first.

**■** **(1) Note:** Total time in service of the affected driving gear must be counted from the installation of an affected part (driving gear) on an engine. E.g. an affected part is installed on an E4A Engine having 480FH, the driving gear must be replaced before reaching 520FH; an affected part is installed on an E4B/C/P engine having 480FH, the driving gear must be replaced before reaching 560FH.

**■** **Note:** For a twin-engine aeroplane that has one or two E4B/C/P engine(s) installed, a single ferry flight is allowed to position that aeroplane to a location where the actions required by this Service Bulletin can be accomplished on the affected engine(s).

#### 1.6. CONCURRENT DOCUMENTS / REFERENCES


If not specified, the latest revision of the concurrent/referenced documents applies

- Maintenance Manual E4.08.04

#### 1.7. OTHER PUBLICATIONS AFFECTED

None

First Issue Date			Rev. No.	Revision Date				Page
11	Aug	2021	2	10	09	2021	12-19	

	<p>Mandatory Service Bulletin No. MSB-E4-034/2</p>	<p>Austro Engine GmbH Rudolf-Diesel-Strasse 11 A-2700 Wiener Neustadt Tel: +43 2622 23000 FAX: +43 2622 23000-2711</p>
---	--	--

## 2. TECHNICAL DETAILS

### 2.1. ACCOMPLISHMENT / INSTRUCTIONS

1. Remove the HPP in accordance with the instruction provided in the Maintenance Manual, chapter 73-10-03 paragraph A
2. Remove the drive gear from the HPP in accordance with the Maintenance Manual, chapter 73-10-03 paragraph C.


**CAUTION:** To block the gear use only the tool p/n AE300T012-1 provided in the kit of this Service Bulletin.

3. To remove the gear from the shaft, use a bearing extractor shown in chapter 3.2
4. Clean the driving gear with Non-chlorinated brake cleaner (recommended product Manufacturer: Förch, Product ID.: R510)
5. Visually inspect the driving gear against colour criteria provided in the table 1. If acceptable criteria are not met, remove the camshafts according to the Engine Maintenance Manual chapter 85-30-00 subchapter 4A (a) - 4A (h), inspect the bushing of the inlet and outlet camshaft, take pictures and provide them to the Austro Engine support team before proceeding with the gear replacement, which is in any case needed.
6. Install the new drive gear in accordance with the instruction provided in the Maintenance Manual, chapter 73-10-03 paragraph D (replacing the nut, if required).

 **Note:** Oil the gear and the O-ring with engine oil before installing the HPP

**CAUTION:** To block the gear use only the tool p/n AE300T012-1 provided in the kit of this Service Bulletin.

7. Install the HPP in accordance with the instruction provided in the Maintenance Manual, chapter 73-10-03 paragraph B, referring to the table 2 for the tightening sequence of the screws
8. Mark one tool cycle on the tool cycles recording sheet (provided as appendix in this service bulletin) and fill the execution report.

 **Note:** One cycle is equal to one old gear deinstallation and one new gear installation.

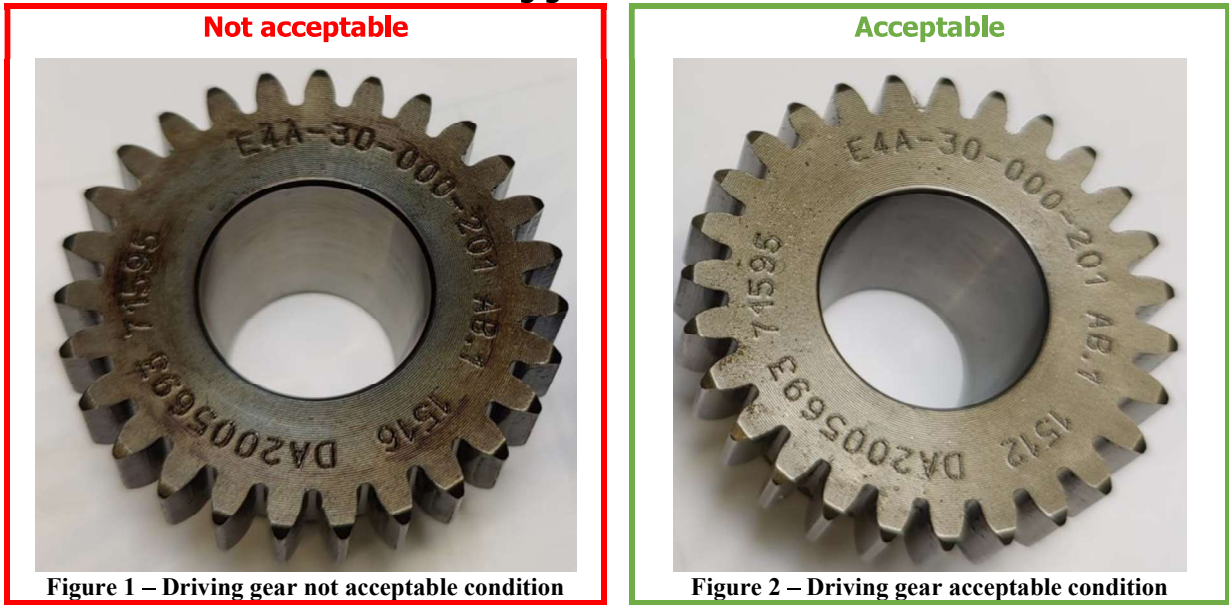
 **Note:** When the assembly wrench reaches 100 cycles, discard the tool

9. Conduct an engine ground run of 15 mins, of which 5 mins are MTOP (maximum take-off power).
10. After the ground run, remove the HPP and clean the gear with Non-chlorinated brake cleaner then inspect the new gear against colour criteria provided in the table 1. If acceptable criteria are not met, remove the camshafts according to the Engine Maintenance Manual chapter 85-30-00 subchapter 4A (a) - 4A (h), inspect the bushing of the inlet camshaft on the HPP side, take pictures and provide it to Austro Engine support team.
11. Install again the HPP in accordance with the instruction provided in the Maintenance Manual, chapter 73-10-03 paragraph B, referring to the table 2 for the tightening sequence of the screws

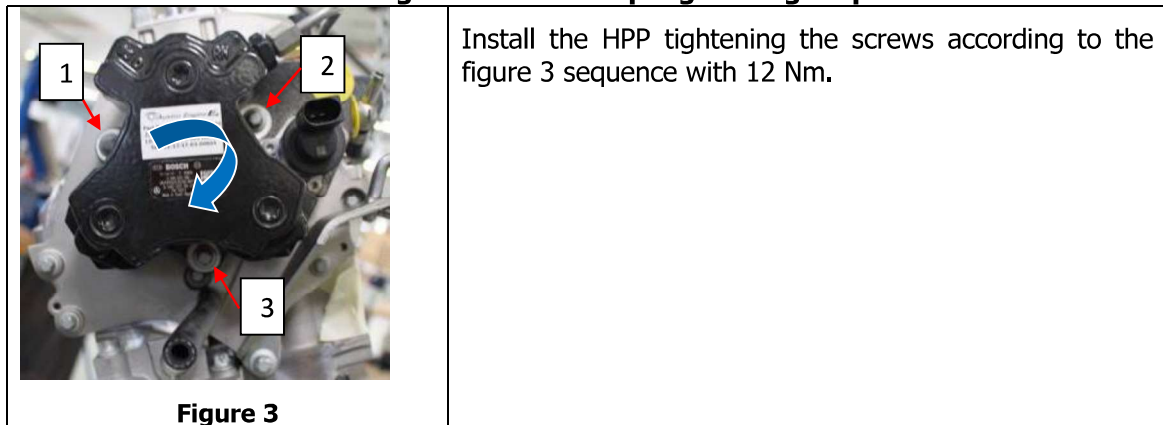
First Issue Date			Rev. No.	Revision Date			Page
11	Aug	2021	2	10	09	2021	13-19

- **Note:** Oil the gear and the O-ring with engine oil before installing the HPP
- **Note:** For engines where the MSB-E4-034 rev. 0 was already performed, the new installed gear must be inspected in accordance with the requirements of chapter 2.1, points 10 and 11 of the MSB-E4-034 at rev. 1

**Table 1 - Driving gear colour check chart**

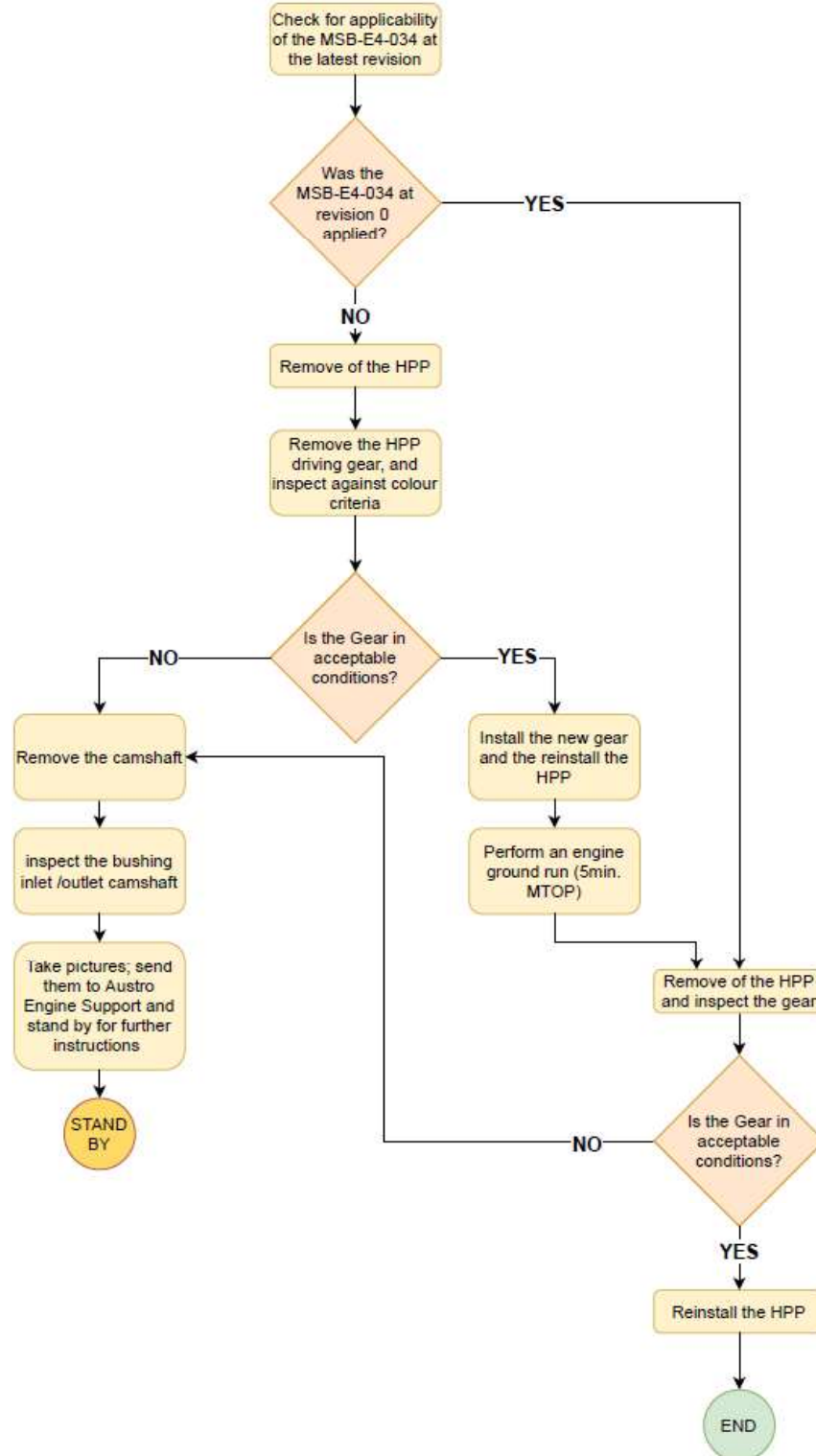


**Table 2 – High Pressure Pump Tightening Sequence**



First Issue Date			Rev. No.	Revision Date			Page
11	Aug	2021	2	10	09	2021	14-19

**Process summarised**



First Issue Date			Rev. No.	Revision Date			Page
11	Aug	2021	2	10	09	2021	15-19

## 2.2. ILLUSTRATIONS

None.

## 2.3. MASS (WEIGHT)

Not affected.

## 2.4. APPROVAL STATEMENT

The technical content of this document is approved under the authority of the DOA ref. EASA.21J.399.

## 3. PLANNING INFORMATION

### 3.1. MATERIAL & AVAILABILITY

Quantity	Part Description	Part Number
1	HPP Drive Gear	E4A-30-000-201 or E4A-30-000-601
2	Gasket	DIN7603-12x16x2.0
2	Gasket	DIN7603-A12x16-AL
1	holder wrench HPP	AE300T012-1

**Note:** The assembly wrench can be used for 100 cycles, after that the tool is not serviceable and must be scraped.


### 3.2. SPECIAL TOOLS

No.	Description	Note
1	holder wrench HPP	This special tool is provided as part of this SB and it is limited to 100 cycles
2	Bearing Extractor	Ref. to the figure 3, not part of the service bulletin kit



Figure 4 – Bearing Extractor

First Issue Date			Rev. No.	Revision Date			Page
11	Aug	2021	2	10	09	2021	16-19

	Mandatory Service Bulletin No. MSB-E4-034/2	Austro Engine GmbH Rudolf-Diesel-Strasse 11 A-2700 Wiener Neustadt Tel: +43 2622 23000 FAX: +43 2622 23000-2711
---	--	---

### 3.3. LABOR EFFORT

2 hours

## 4. REMARKS

### **NOTE:**

- All measures must be carried out by a certified engine station and certified engine mechanics.
- The accomplishment of the instructions shown under Section 2.1 must be confirmed in the respective engine log book.
- The accomplishment of the instructions must be carried out within the time of compliance according chapter 1.
- In case of doubt please contact the Austro Engine GmbH – After Sales Support (e-mail: [service@austroengine.at](mailto:service@austroengine.at); Tel: +43 2622 23000 2525).
- For credit information contact Austro Engine GmbH – After Sales Support (e-mail: [service@austroengine.at](mailto:service@austroengine.at); Tel: +43 2622 23000 2525)

## 5. EXPLANATORY NOTES


### 5.1. SYMBOL EXPLANATION




**CAUTION:** Disregarding these special instructions and safety measures can cause damage to the engine or other components.

**NOTE:** Additional note or instruction for better understanding of an instruction

First Issue Date			Rev. No.	Revision Date			Page
11	Aug	2021	2	10	09	2021	17-19


	Mandatory Service Bulletin No. MSB-E4-034/2	Austro Engine GmbH Rudolf-Diesel-Strasse 11 A-2700 Wiener Neustadt Tel: +43 2622 23000 FAX: +43 2622 23000-2711
---	--	---


## 6. APPENDIX

		<b>HPP Wrench Cycles recording sheet</b>							
<p><b>Note:</b></p> <p><b>For each cycle, mark a cross on the corresponding box. When 100 cycles are reached, discard the wrench.</b></p> <p><b>1 Gear replacement (removal &amp; installation) = 1 cycle</b></p>									
<b>1</b>	<b>2</b>	<b>3</b>	<b>4</b>	<b>5</b>	<b>6</b>	<b>7</b>	<b>8</b>	<b>9</b>	<b>10</b>
<b>11</b>	<b>12</b>	<b>13</b>	<b>14</b>	<b>15</b>	<b>16</b>	<b>17</b>	<b>18</b>	<b>19</b>	<b>20</b>
<b>21</b>	<b>22</b>	<b>23</b>	<b>24</b>	<b>25</b>	<b>26</b>	<b>27</b>	<b>28</b>	<b>29</b>	<b>30</b>
<b>31</b>	<b>32</b>	<b>33</b>	<b>34</b>	<b>35</b>	<b>36</b>	<b>37</b>	<b>38</b>	<b>39</b>	<b>40</b>
<b>41</b>	<b>42</b>	<b>43</b>	<b>44</b>	<b>45</b>	<b>46</b>	<b>47</b>	<b>48</b>	<b>49</b>	<b>50</b>
<b>51</b>	<b>52</b>	<b>53</b>	<b>54</b>	<b>55</b>	<b>56</b>	<b>57</b>	<b>58</b>	<b>59</b>	<b>60</b>
<b>61</b>	<b>62</b>	<b>63</b>	<b>64</b>	<b>65</b>	<b>66</b>	<b>67</b>	<b>68</b>	<b>69</b>	<b>70</b>
<b>71</b>	<b>72</b>	<b>73</b>	<b>74</b>	<b>75</b>	<b>76</b>	<b>77</b>	<b>78</b>	<b>79</b>	<b>80</b>
<b>81</b>	<b>82</b>	<b>83</b>	<b>84</b>	<b>85</b>	<b>86</b>	<b>87</b>	<b>88</b>	<b>89</b>	<b>90</b>
<b>91</b>	<b>92</b>	<b>93</b>	<b>94</b>	<b>95</b>	<b>96</b>	<b>97</b>	<b>98</b>	<b>99</b>	<b>100</b>
<i>HPP Drive gear wrench p/n</i>									

First Issue Date			Rev. No.	Revision Date			Page
11	Aug	2021	2	10	09	2021	18-19




	<p>Mandatory Service Bulletin No. MSB-E4-034/2</p>	<p>Austro Engine GmbH Rudolf-Diesel-Strasse 11 A-2700 Wiener Neustadt Tel: +43 2622 23000 FAX: +43 2622 23000-2711</p>
---	--	--

	<p><b>Service Bulletin Execution Report</b></p>	<p><b>Note:</b></p>
Aircraft owner:		
Aircraft Operator:		<i>If different from the owner</i>
Aircraft:		
Aircraft Serial Number:		
Aircraft Marks:		
Engine (RH) s/n:		<i>For single engine a/c, fill only one row</i>
Engine (LH) s/n:		
Flight Hours:		
Service center:		<i>Company Name or reference of the person(s) performing the oil pump replacement</i>
Removed HPP Gear s/n:		<i>Refer to the figure below to identify the serial number</i>
<p><b>NOTE:</b> A scanned version of this form must be provided to <a href="mailto:service@austroengine.at">service@austroengine.at</a></p>		
<p><b>NOTE:</b> The original filled version of this form, must be packed with the removed gear, and provided to Austro Engine</p>		



**Figure 5 – Gear s/n location**

First Issue Date			Rev. No.	Revision Date			Page
11	Aug	2021	2	10	09	2021	19-19

	Mandatory Service Bulletin No. MSB-E4-035	Austro Engine GmbH Rudolf-Diesel-Strasse 11 A-2700 Wiener Neustadt Tel: +43 2622 23000 FAX: +43 2622 23000-2711
---	--	---

# MANDATORY SERVICE BULLETIN

## No. MSB-E4-035

### 1. BASIC INFORMATION

---

#### 1.1. SUBJECT


High Pressure Pump driving gear inspection

#### 1.2. DEFINITIONS AND ACRONYMS

For the purpose of this Service Bulletin, the following definitions and acronyms apply:

<b>Affected part:</b>	High Pressure Pump driving gear
<b>Fh:</b>	flight hours
<b>HPP:</b>	High Pressure pump
<b>p/n or p/ns:</b>	Part number or Part Numbers
<b>SB:</b>	Service Bulletin
<b>s/n or s/ns:</b>	Serial Number or Serial Numbers

First Issue Date			Rev. No.	Revision Date				Page
10	Sep	2021	---	---	---	---	1-8	

	<p style="text-align: center;"><b>Mandatory Service Bulletin</b> No. MSB-E4-035</p>	<p>Austro Engine GmbH Rudolf-Diesel-Strasse 11 A-2700 Wiener Neustadt Tel: +43 2622 23000 FAX: +43 2622 23000-2711</p>
---	---	--

### 1.3. ENGINES AFFECTED

<b>Engine affected:</b>	E4 Series
<b>Serial numbers affected<sup>(2)</sup>:</b>	All E4/E4P engine s/ns having a Cylinder Head part number E4A-12-500-000 installed <sup>(1)</sup>
<b>Part Affected:</b>	High Pressure Pump driving gear

■ **(1) Note:** To identify the cylinder head installed, refer to the maintenance manual E4.08.04 chapter 85. Additional Cylinder Head identification methods are provided in the Service Instruction no. SI-E4-016

■ **(2) Note:** Replacement of a High-Pressure Pump driving gear accomplished in accordance with the instruction of the Mandatory Service Bulletin no. MSB-E4-034 at revision 1 (or subsequent approved revision), is acceptable to comply with the requirements of paragraph 2.1 of this Service Bulletin for that engine.

### 1.4. REASON

Stack up of tolerances between the Cylinder Head (CH), CH cover, Camshaft Gear and High-Pressure Pump (HPP) gear is found for those engines having a Cylinder Head part number E4A-12-500-000 installed. This condition, if not detected, could result in premature failure of the HPP drive gear resulting in rail pressure loss and engine shutdown.

### 1.5. TIME OF COMPLIANCE

Before the next flight

### 1.6. CONCURRENT DOCUMENTS / REFERENCES


If not specified, the latest revision of the concurrent/referenced documents applies

- Maintenance Manual E4.08.04
- Service Instruction SI-E4-016
- Mandatory Service Bulletin MSB-E4-034 rev. 1 or subsequent approved revisions

### 1.7. OTHER PUBLICATIONS AFFECTED

None

First Issue Date			Rev. No.	Revision Date				Page
10	Sep	2021	---	---	---	---	2-8	

	<p>Mandatory Service Bulletin No. MSB-E4-035</p>	<p>Austro Engine GmbH Rudolf-Diesel-Strasse 11 A-2700 Wiener Neustadt Tel: +43 2622 23000 FAX: +43 2622 23000-2711</p>
---	--	--

## 2. TECHNICAL DETAILS

### 2.1. ACCOMPLISHMENT / INSTRUCTIONS

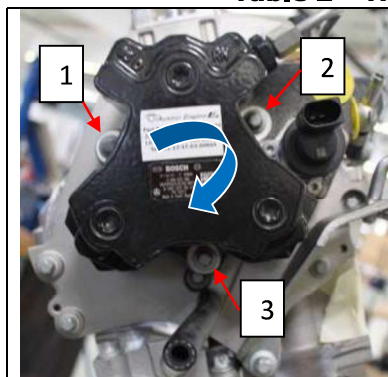
1. Remove the HPP in accordance with the instruction provided in the Maintenance Manual, chapter 73-10-03 paragraph A
2. Clean the driving gear with Non-chlorinated brake cleaner (recommended product Manufacturer: Förch, Product ID.: R510)
3. Visually inspect the driving gear against colour criteria provided in the table 1. If acceptable criteria are not met, remove the camshafts according to the Engine Maintenance Manual chapter 85-30-00 subchapter 4A (a) - 4A (h), inspect the bushing of the inlet and outlet camshaft, take pictures and provide them to the Austro Engine support team. If the gear is in acceptable conditions, then proceed to step 5

 **Note:** In case of doubt, contact Austro Engine providing pictures of the driving gear

4. Reinstall the HPP in accordance with the instruction provided in the Maintenance Manual, chapter 73-10-03 paragraph B referring to the table 2 for the tightening sequence of the screws
5. Fill the execution report and send it back to [service@austroengine.at](mailto:service@austroengine.at)

First Issue Date			Rev. No.	Revision Date				Page
10	Sep	2021	---	---	---	---	3-8	

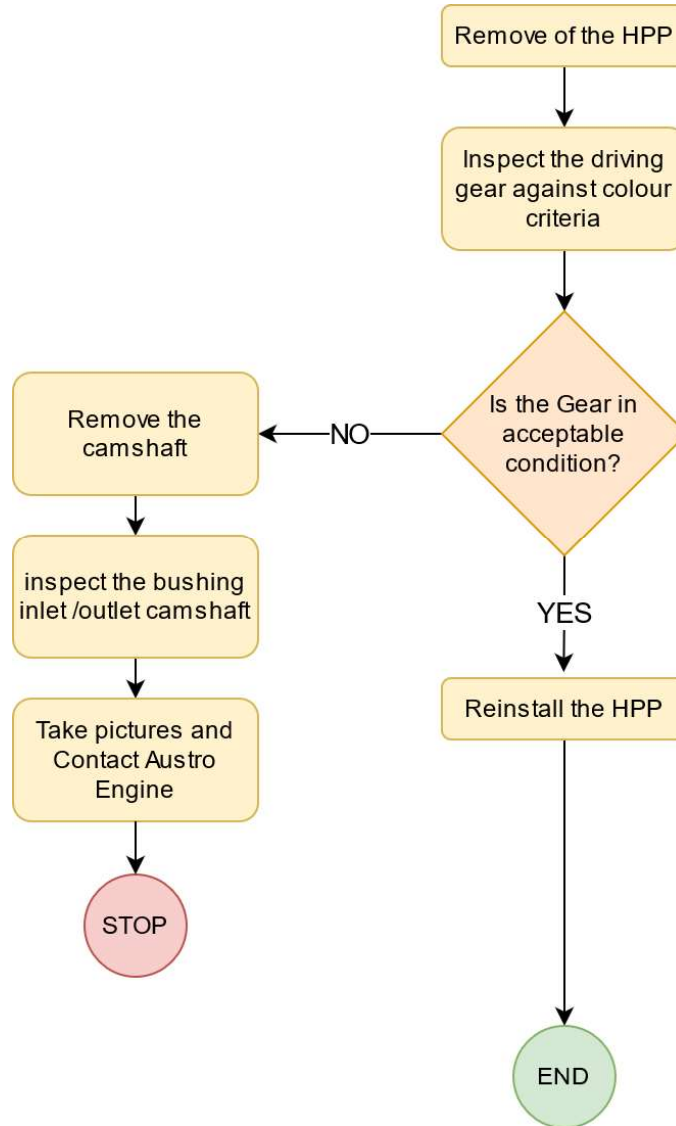
**Table 1 - Driving gear colour check chart**

**Table 2 – High Pressure Pump Tightening Sequence**

**Figure 3**

Install the HPP tightening the screws according to the figure 3 sequence with 12 Nm.

First Issue Date			Rev. No.	Revision Date				Page
10	Sep	2021	---	---	---	---	4-8	


*Process summarised*



## 2.2. CREDIT/COMPLIANCE

Replacement of a High-Pressure Pump driving gear accomplished in accordance with the instruction of the Mandatory Service Bulletin no. MSB-E4-034 at revision 1 (or subsequent approved revision), is acceptable to comply with the requirements of paragraph 2.1 of this Service Bulletin for that engine.

First Issue Date			Rev. No.	Revision Date				Page
10	Sep	2021	---	---	---	---	5-8	

	<p>Mandatory Service Bulletin No. MSB-E4-035</p>	<p>Austro Engine GmbH Rudolf-Diesel-Strasse 11 A-2700 Wiener Neustadt Tel: +43 2622 23000 FAX: +43 2622 23000-2711</p>
---	--	--

**2.3. ILLUSTRATIONS**

None.


**2.4. MASS (WEIGHT)**

Not affected.

**2.5. APPROVAL STATEMENT**

The technical content of this document is approved under the authority of the DOA ref. EASA.21J.399.

First Issue Date			Rev. No.	Revision Date				Page
10	Sep	2021	---	---	---	---	6-8	

	Mandatory Service Bulletin No. MSB-E4-035	Austro Engine GmbH Rudolf-Diesel-Strasse 11 A-2700 Wiener Neustadt Tel: +43 2622 23000 FAX: +43 2622 23000-2711
---	--	---

### 3. PLANNING INFORMATION

---

#### 3.1. MATERIAL & AVAILABILITY

None

#### 3.2. SPECIAL TOOLS

None

#### 3.3. LABOR EFFORT

0.5 Hours

### 4. REMARKS

---

#### **NOTE:**

- All measures must be carried out by a certified engine station and certified engine mechanics.
- The accomplishment of the instructions shown under Section 2.1 must be confirmed in the respective engine log book.
- The accomplishment of the instructions must be carried out within the time of compliance according chapter 1.
- In case of doubt please contact the Austro Engine GmbH – After Sales Support (e-mail: [service@austroengine.at](mailto:service@austroengine.at); Tel: +43 2622 23000 2525).
- For credit information contact Austro Engine GmbH – After Sales Support (e-mail: [service@austroengine.at](mailto:service@austroengine.at); Tel: +43 2622 23000 2525)

### 5. EXPLANATORY NOTES

---

#### 5.1. SYMBOL EXPLANATION




**CAUTION:** Disregarding these special instructions and safety measures can cause damage to the engine or other components.

**NOTE:** Additional note or instruction for better understanding of an instruction

First Issue Date			Rev. No.	Revision Date				Page
10	Sep	2021	---	---	---	---	7-8	



	<p>Mandatory Service Bulletin No. MSB-E4-035</p>	<p>Austro Engine GmbH Rudolf-Diesel-Strasse 11 A-2700 Wiener Neustadt Tel: +43 2622 23000 FAX: +43 2622 23000-2711</p>
---	--	--


	Service Bulletin Execution Report	Note:
Aircraft owner:		
Aircraft Operator:		<i>If different from the owner</i>
Aircraft:		
Aircraft Serial Number:		
Aircraft Marks:		
Engine (RH) s/n:		<i>For single engine a/c, fill only one row</i>
Engine (LH) s/n:		
Flight Hours:		
Service center:		<i>Company Name or reference of the person(s) performing the oil pump replacement</i>
Inspected HPP s/n:		<i>Refer to the figure 4 below to identify the serial number</i>
<p><b>NOTE:</b> A scanned version of this form must be provided to <a href="mailto:service@austroengine.at">service@austroengine.at</a></p>		
<p><b>NOTE:</b> The original filled version of this form, must be packed with the removed gear, and provided to Austro Engine</p>		



Figure 4 – HPP p/n and s/n location

First Issue Date			Rev. No.	Revision Date				Page
10	Sep	2021	---	---	---	---	8-8	